

BitWise AV Control Solutions

Technical and Sales Training

May 6, 2015

Product Information

BitWise AV Automation

What is BitWise?

■ BitWise™ AV Control

- “BitWise Controls” = former brand acquired by Leviton
- AV Component control and automation
 - Press one button on the iPad to turn on appropriate AV devices, lower lights, adjust temperature, etc.
 - Scalable from a single-room to an entire home or building

■ 23 Product SKUs Available Now:

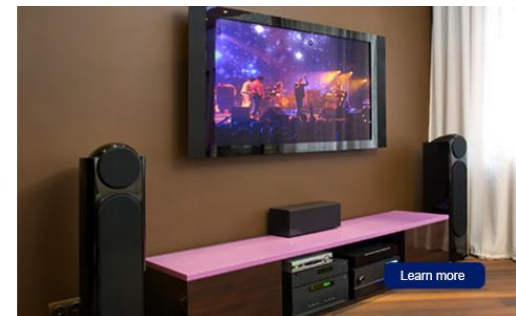
- Controllers
- RF Remote Controls
- Free iOS and Android Apps
- Templates (GUI's)
- Modules (pre-configured)
- OmniTouch 7 Touchscreen
- Project Editor Software v. 1.9
- Accessories
 - Wi-Fi Adapter
 - IR Learner



BitWise™

Control your AV equipment from your smartphone or tablet!

Automate based on time or event.



BitWise Features and Benefits

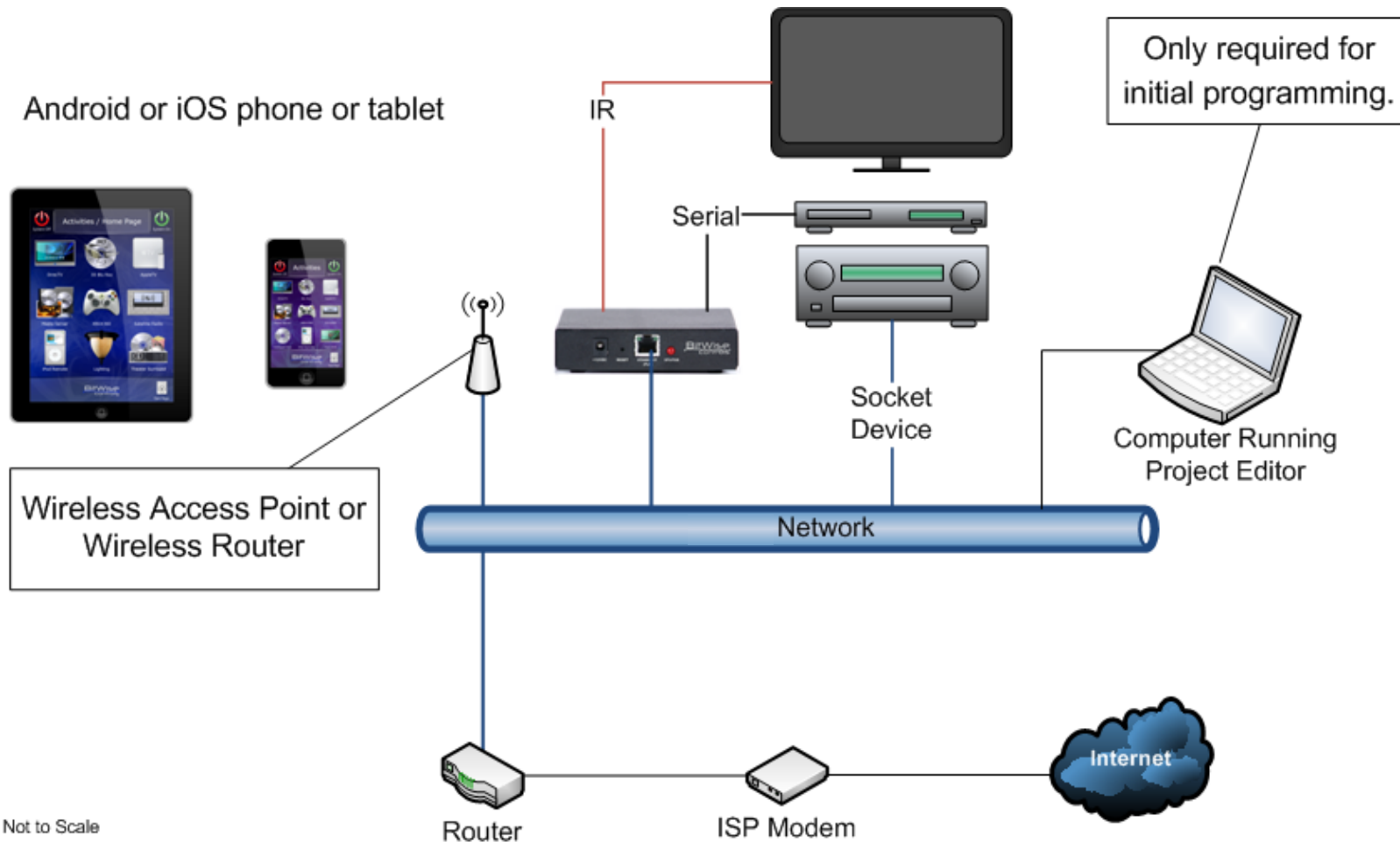
- **Cost-effective alternative to high-priced control systems**
- **Innovative products that are customizable, scalable, reliable, and technically advanced**
- **Fully customizable GUI packages**
 - Easy drag-and-drop programming
 - iOS and Android user interface compatibility
 - No app fees OR per device license fees
 - Some competitors charge for the app, others charge for each access point
- **Templates and Modules for easier and faster system design**

**BitWise Controls
is now part
of Leviton!**

Learn
more!

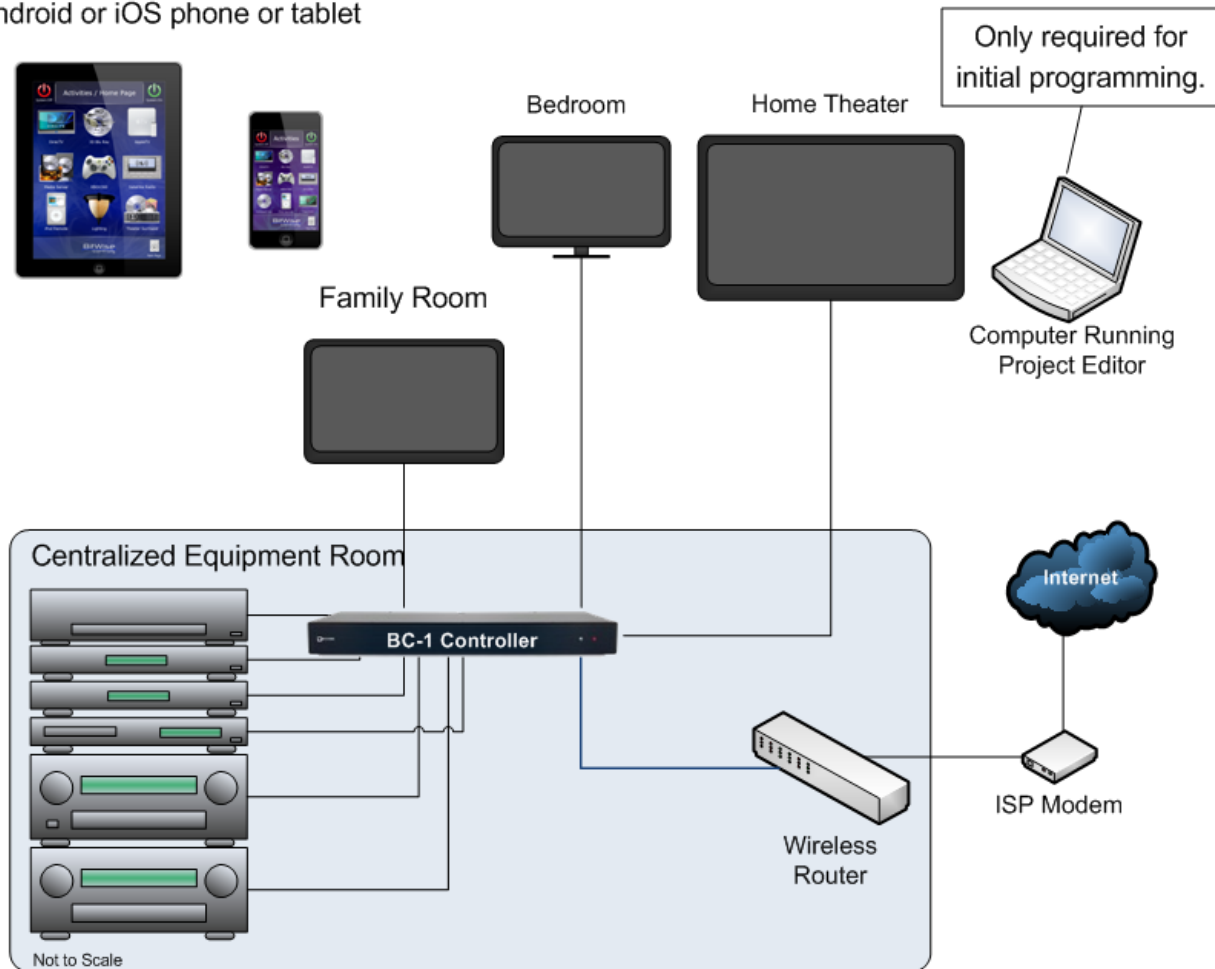


Basic Single Room Topology



Multi-Room/Zone Topology

Android or iOS phone or tablet



Component Breakdown

BitWise AV Automation

What Products Comprise the BitWise Family?

Automation Controller Part Numbers

| Leviton Part Number | Description |
|---------------------|---|
| 000-BWBC1-000 | BC1, US Power Supply, 8 IR ports, 4 RS232, 4 GPIO, 4 Relays, 1 IR input |
| 005-BWBC1-0NT | BC1, Intl Power Supply, 8 IR ports, 4 RS232, 4 GPIO, 4 Relays, 1 IR input |
| 000-BWBC2-000 | BC2, US Power Supply, 4 IR ports; 2 RS232; 2 GPIO; 2 Relays |
| 005-BWBC2-0NT | BC2, Intl Power Supply, 4 IR ports, 2 RS232, 2 GPIO, 2 Relays |
| 000-BWBC4-000 | BC4-BCX-1 PRO, US power supply, BW BC4 with 4 IR ports, GPIO, RS232 |
| 005-BWBC4-0NT | BC4-BCX-1 PRO, Intl Power Supply, 4 IR ports, GPIO, RS232 |

Accessory Part Numbers

| Leviton Part Number | Description |
|---------------------|---|
| 000-BWWFA-000 | Wi-Fi Adapter with External Antenna (BC1/BC2) |
| 000-EN928-000 | Single Head Flashing IR Emitter |
| 000-BWEM2-000 | Dual Head Flashing IR Emitter |
| 000-BWIRI-000 | IR Receiver Module |
| 000-BWIRL-000 | IR Learner |
| 000-BWDPS-000 | US Power Supply, 12V |
| 000-BWIPS-000 | International Power Supply, 12VDC |
| 000-BWDBF-000 | DB9 Female-RJ45 Female Adapter |
| 000-BWDBM-000 | DB9 Male-RJ45 Female Adapter |
| 000-BWEAR-000 | BC2 Rack Ears |
| 000-BWIRA-000 | Adapter for connecting a BC-1 IR In port to a Distributed IR system |

What Products Comprise the BitWise Family?

Touchscreen and App Part Numbers

| Leviton Part Number | Description |
|---------------------------------------|------------------------------------|
| 021-TS901-000 | PoE Power Injector with A/C Cord |
| 021-99A00-001 | OmniTouch 7 Touchscreen, White |
| 021-99A00-002 | OmniTouch 7 Touchscreen, Black |
| Available in iTunes/Google Play Store | BitWise Touch App (iOS or Android) |

Remote Control Part Numbers

| Leviton Part Number | Description |
|---------------------|----------------------------|
| 000-BWRMT-000 | RF Remote Control |
| 000-BWRRR-000 | RF Remote Control Receiver |

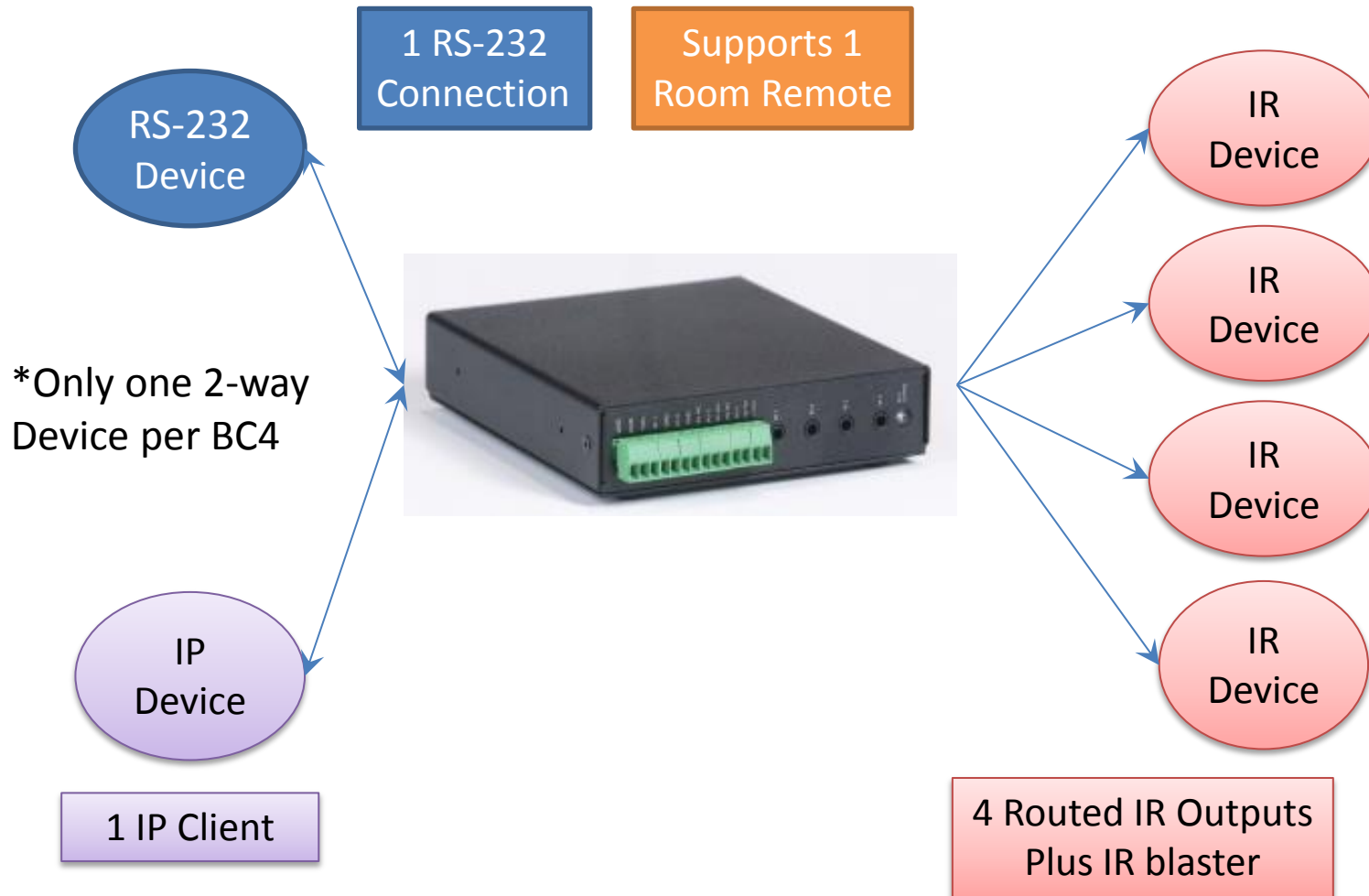


BC4 Controller Features

- 5 IR Ports (4 - 3.5mm Jacks and 1 blaster)
- 12V DC Constant Power Output
- 2 SPDT Relays (rated for 2A @ 30VDC)
- 2 General Purpose Input Outputs (GPIO)
- 1 RS-232 Bi-Directional Serial Port
- 12VDC External Power Supply (Included) or Power Over Ethernet (POE)



BC4 Control Overview

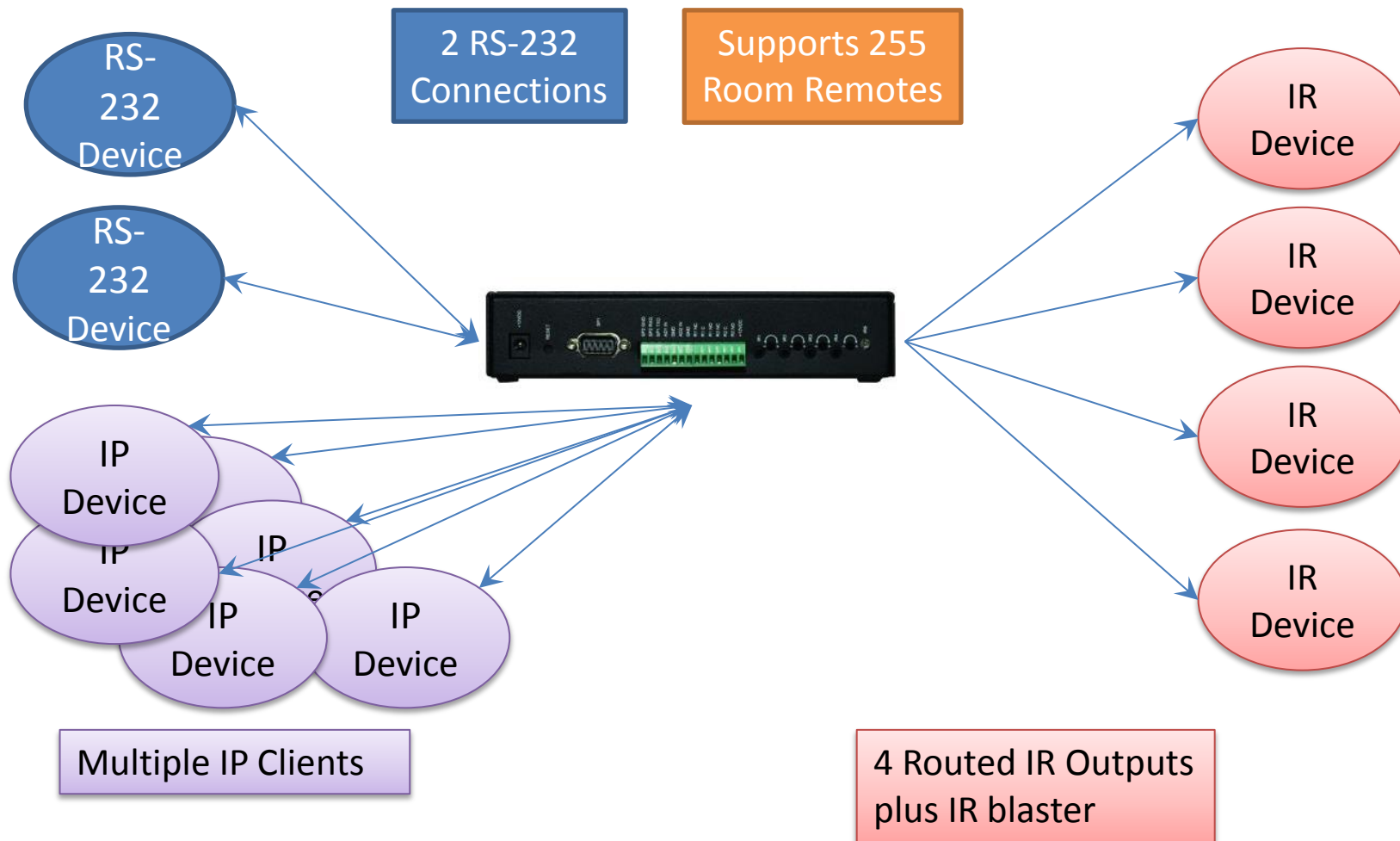


BC2 Controller Features

- 5 Assignable IR Outputs (4 – Adjustable 3.5 mm Jacks and 1 blaster)
- 2 SPDT Relays (rated for 2A @ 30VDC)
- 12V DC Constant Power Output
- 2 Analog to Digital Converters
- 2 RS-232 Bi-Directional Serial Port
- Scheduled Tasks
- 2 USB Ports (Future Expansion)



BC2 Control Overview

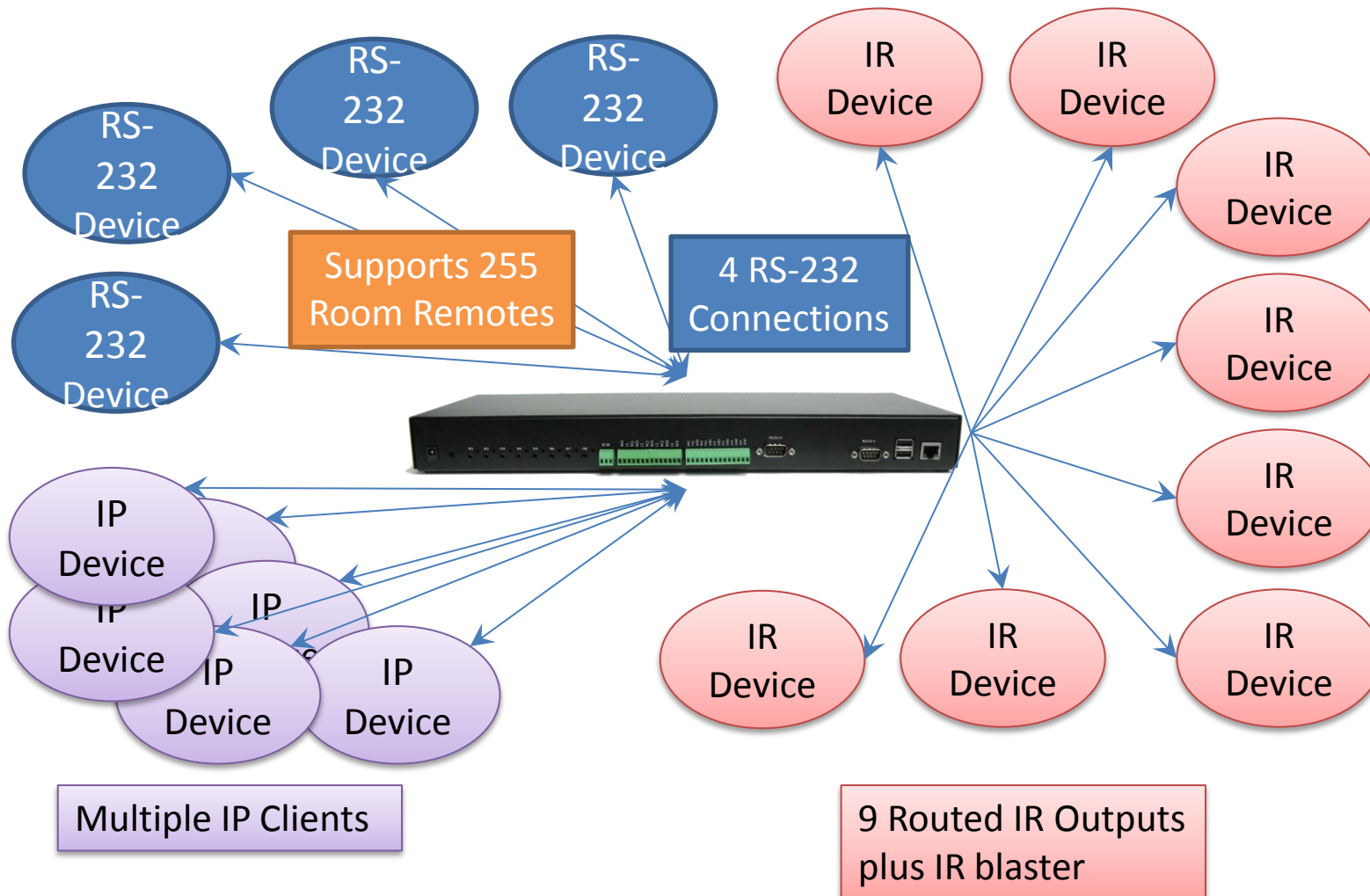


BC1 Controller Features

- 9 Assignable IR Outputs (8 - Adjustable 3.5 mm Jacks and 1 blaster)
- BC-IRI Built-In
- 4 SPDT Relays (rated for 2A @ 30VDC)
- 12V DC Constant Power Output
- 4 Analog to Digital Converters
- 4 RS-232 Bi-Directional Serial Port
- Scheduled Tasks
- 2 USB Ports
- Rack Mountable (ears included)



BC1 Control Overview



OmniTouch 7 Touchscreen

- Available in Black and White
- Dedicated Control:
 - “Always there, Always on”
- Table top stand coming soon!
- Applications:
 - In-wall for retail/restaurant
 - Table-top for board/conference rooms
- Same SKU as Omni and Gateway, distributors stock 1 product



BitWise Touch: iOS and Android Apps

- iOS and Android Available
- Customizable Graphical User Interface (GUI)
- Use Templates or start from scratch!
 - Purchase in BitWise Online Store
 - Five template packages available
 - Push
 - Euro
 - Fusion
 - Innovate
 - Xenon



RF Room Remote Control

■ RF Room Remote

- RF – Communicates with controllers via RF-RS232 receiver
 - No IR; does not require line of sight
- Drag/drop programming
- Up to 255 unique RF addresses can be used



■ RF Receiver

- RF receiver must be connected to BC1, BC2 or BC4*
- Can use multiple remotes w/single RF receiver
- Multiple RF receivers can be used throughout install

*BC4 Supports one remote only.

Programming Information

BitWise AV Automation

Bitwise Project Editor Setup Software: Overview

- PC, Windows software for programming and GUI configuration

- Free download for installers for their staff (not to be distributed to end-users)

- Protected executable file, must register as an installer

- Download Available via BitWise Support Center

- Leviton.com/BitWise to access and register
- Chris Zuccaro will see application and approve

LEVITON®

Live Chat

Search by Keyword, Product# or Manufacturer Cross Reference Search

Products | Solutions | News | Support | Professionals | Where to Buy | About

Home > Products > Security & Automation > Automation/ AV Controllers > BitWise

PRINT

BitWise

BitWise™
Dedicated Touchscreen Control
Award-winning OmniTouch 7

Learn more

BitWise AV Controllers are designed for customizable control of sub-systems within home theaters, retail, restaurants, boardrooms, classrooms, houses of worship, and much more. Integrators can create custom interfaces for OmniTouch 7, iOS, and Android devices, ensuring complete end-user satisfaction. A host of accessories including Wi-Fi connectivity rounds out the product offering.

Installers will need to register for the [DEALER STORE](#) to download templates and pre-populated modules. They may also register for the [DEALER SUPPORT CENTER](#) to watch training videos and learn in-depth information about the product solutions.

[AV Controllers](#) | [Accessories](#) | [Interfaces](#)

Resources

- Store
- Support Center**
- Sales Questions

Solution Sheets

BitWise Setup Software: Project Workflow



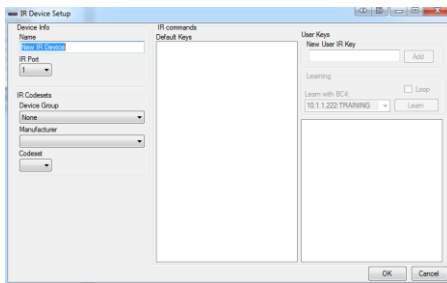
Add Controller to Project

Add and test devices

Build and test Macros

Design and Program GUI's

Upload to Apps/Touchscreens



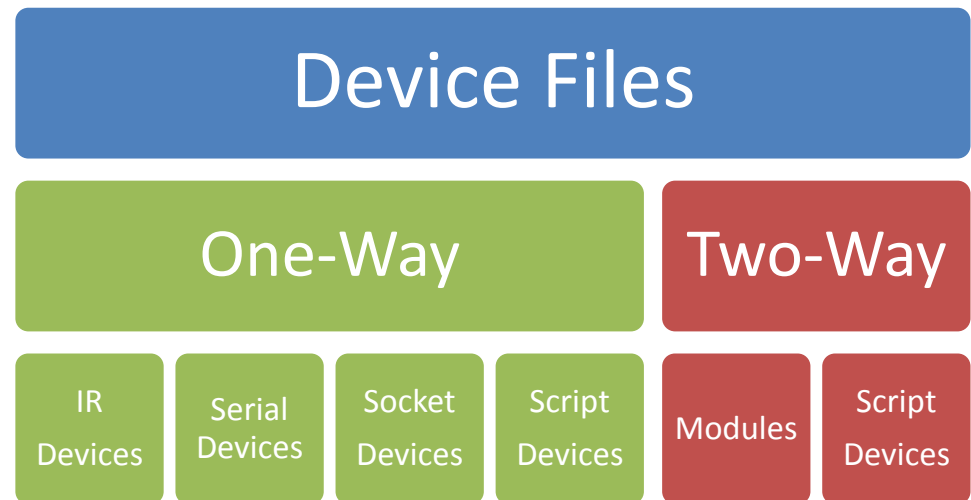
Device File Types

■ Types of devices we can work with and control:

- IR
- Serial (RS-232)
- Socket (IP Enabled)
- 2-Way Serial/IP
 - Network controlled
 - TCP/http/UDP

■ IR Device Sources

- BitWise IR Database
- Learn IR
- Import Pronto Hex Codes

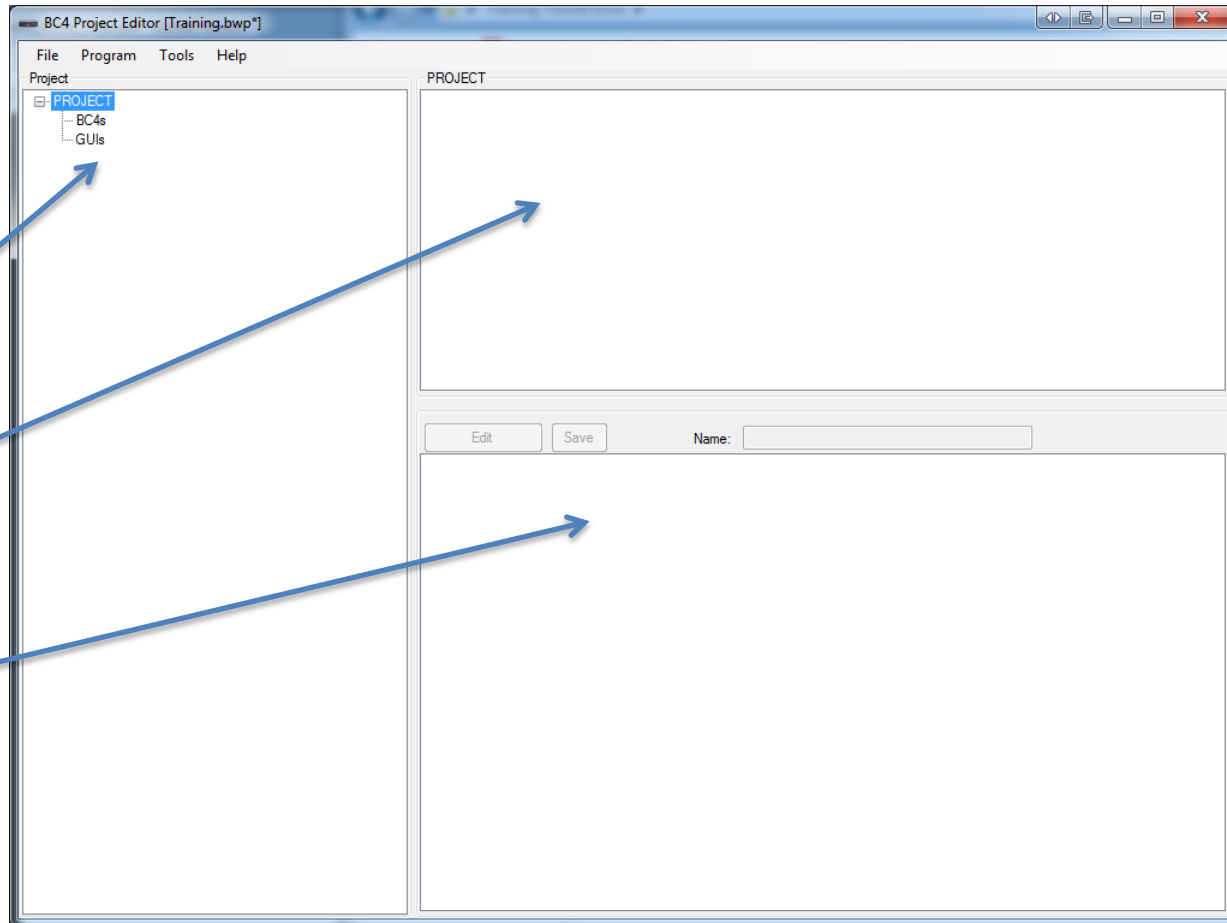


BitWise Setup Software: Main Screen

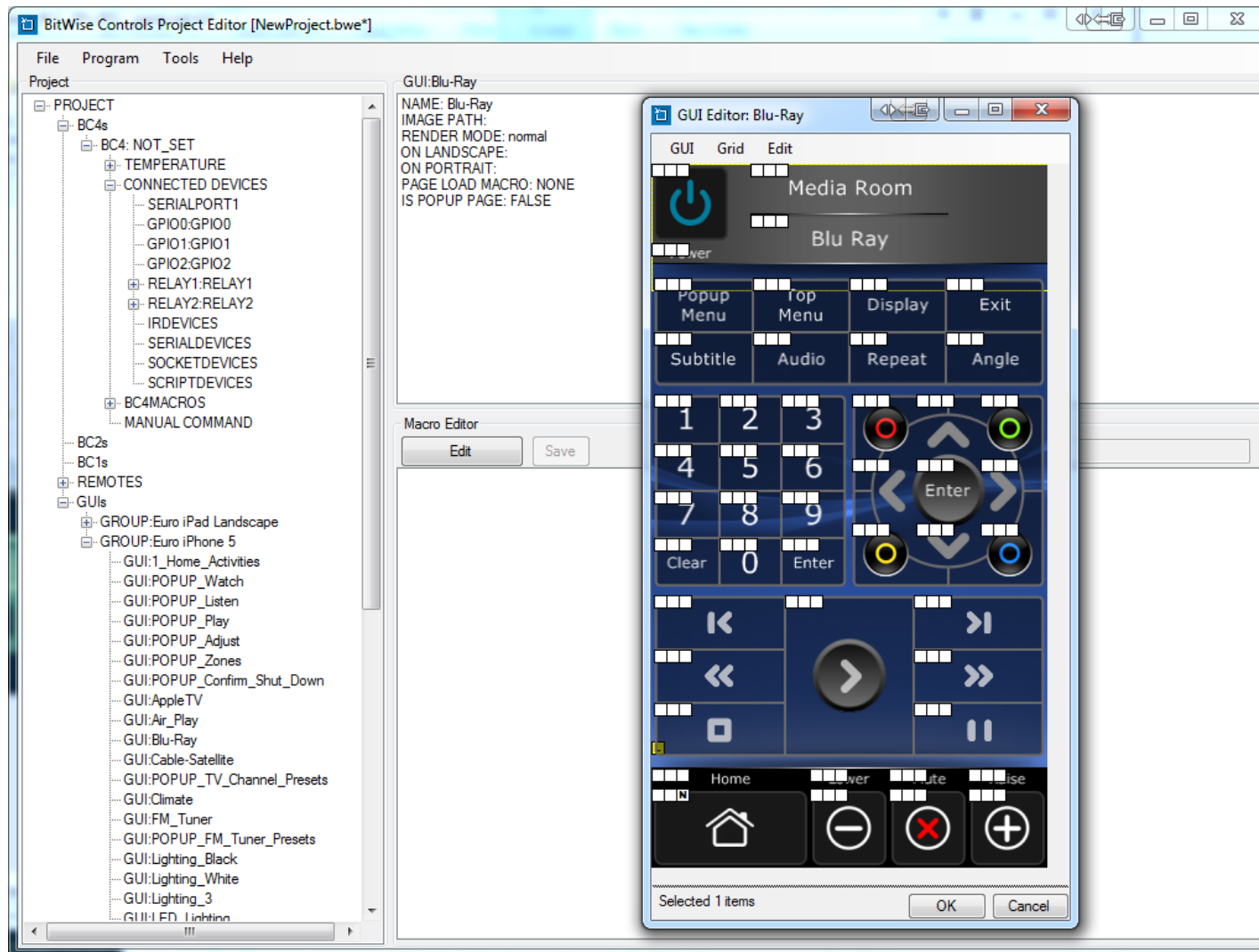
Project Tree

Properties Window

Macro Editor



BitWise Setup Software: Main Screen (Populated)



Graphical User Interfaces (GUI)

- **Whatever you choose, the GUI interface is completely customizable.**

- Customize pages for your most common jobs

- **Create Your Own**

- **Or use pre-made templates**

- **Program the buttons**

- Add IR, serial, or socket (IP enabled) commands
- Add macros

- **Upload the GUI group to the BitWise Touch app**



Button Programming Indicators

- P = Button has a PRESSED action programmed.
- R = Button has a RELEASE action programmed.
- N = Button has a NAVIGATION action programmed.



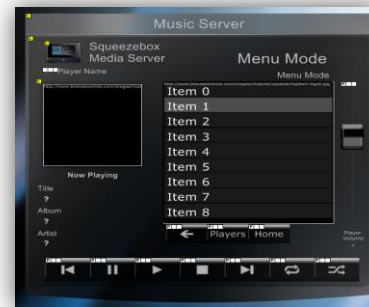
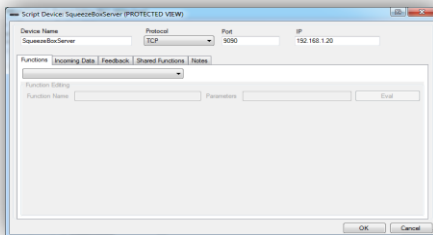
Button Properties

The image shows a screenshot of the 'button39: Properties' dialog box. Four blue arrows on the left point to the following sections: 'Normal & Pressed Images', 'Feedback ID', 'Navigation', and 'Action & Command Tag'. A fifth blue arrow labeled 'Text' points to the 'Button Text' section. The dialog box contains the following sections:

- Button Images:** Normal Image (Play button) and Pressed Image (Play button). Each has a 'Change' button below it.
- Button Text:** Text field containing 'Play', 'Align' radio buttons (Left, Center, Right), and a 'Change Font' button.
- Button Size:** Height (82), Width (121), Top (292), and Left (325).
- Feedback:** Feedback Text ID and Feedback State ID dropdown menus.
- Navigation:** Navigation dropdown menu and Text input field.
- Wait Page:** Wait Page and Delayed Page dropdown menus.
- Actions:** On Press dropdown menu, Repeat Press Action While Held checkbox, Command Tag dropdown menu (PLAY), Type dropdown menu, Device dropdown menu, and Action dropdown menu.

Modules

- Single files that combine device programming and pre-configured GUI content.
- The drag-and-drop functionality in Project Editor's Module Browser makes installation and two-way features a breeze.
- GUI elements are pre-programmed
- Modules can be updated by dragging the updated module onto the existing one.
- Can still be customized to match the look and feel of the project.



Product Sales Information

BitWise AV Automation

Why was this Brought to Market?

- **Leviton was OEM'ing one BitWise product, the BC4, and rebranding as "HTX" and then "HTX2".**
- **In September 2014, Leviton acquired BitWise Controls with announcement made at CEDIA Denver, in their backyard.**
 - Principal Designer and Engineer now employed by S&A for ongoing projects, development, and support.
- **Product set aligns with home/building automation growth and can be used stand-alone or tied into Leviton's comprehensive control systems.**
- **Affordable, powerful control system that's AV focused with customizable interfaces, items S&A desired to have in our portfolio**

Leviton Acquires BitWise Controls

Superior Audio/Video Automation Manufacturer



What are the Top “Talking Points?”

■ Innovative, Intuitive, and Easy to Integrate solution

- Easy to use – for both integrators and end-users
- Free programming software



■ Simplified App-based control using iOS and Android Devices

- Customizable interfaces
- No per device or per job licensing fees
- Now, Leviton OmniTouch can be used for “always there, always on” dedicated control

■ Scalable to the job with three controller models that can be linked together

- BC4: Entry-level, single-room systems like theaters and small boardrooms
- BC2: Adds additional inputs and outputs including optional Wi-Fi capability
- BC1: Full-width in AV rack, manages virtually any automation task

■ Manufactured and supported by Leviton with ongoing development

Where are they Used?

■ Powerful and flexible products for expanding control systems markets:

- **Commercial**

- Conference/Boardrooms
- Classrooms/Education
- Restaurant/Bar
- Houses of Worship

- **Residential**

- Home Theater
- Whole House

BitWise™

De-clutter your coffee table.

Use the intuitive, convenient RF remote with excellent range!



BitWise™

BC1, BC2, and BC4 Controllers

Solutions for retail, restaurant, office, and home theater.



BitWise™

Dedicated Touchscreen Control

Award-winning OmniTouch 7



BitWise FAQs

■ What Devices Can I Control with BitWise Systems?

- If a device can be controlled via IR, RS-232 or IP - we can most likely control it.

■ How many smart devices can I have within my system.

- As many as you'd like. With no license fees for extra devices.

■ How can I control the system?

- iOS, Android, OmniTouch 7, RF Room Remote

■ What Agency Approvals and Compliances do the Modules Feature?

- BC1, BC2, BC4, Room Remote, and Receiver have FCC, CE and C-Tick approvals

Marketing/Sales Material

BitWise AV Automation

May 6, 2015

BitWise Website

- **Leviton.com/BitWise**
 - Links to Store and Support Center
 - Split Controllers/Interfaces/Accessories into sub-categories
- **Brochure**
 - 4 Real Case Studies
 - 2 Solutions Sheets
- **Technical Data Sheets**
- **Product Bulletin**
- **Need Assistance Form to Business Development Coordinator for Lead Generation**

LEVITON Worldwide | Language | Cross Reference | Contact Us | My Lists | Login

Live Chat Search by Keyword, Product or Manufacturer Cross Reference Search

Products Solutions News Support Professionals Where to Buy About

Home > Products > Security & Automation > Automation/AV Controllers > BitWise

BitWise

BitWise™
BC1, BC2, and BC4 Controllers
Solutions for retail, restaurant, office, and home theater.

Learn more

BitWise AV Controllers are designed for customizable control of sub-systems within home theaters, retail, restaurants, boardrooms, classrooms, houses of worship, and much more. Integrators can create custom interfaces for OmniTouch 7, iOS, and Android devices, ensuring complete end-user satisfaction. A host of accessories including Wi-Fi connectivity rounds out the product offering.

Installers will need to register for the [DEALER STORE](#) to download templates and pre-populated modules. They may also register for the [DEALER SUPPORT CENTER](#) to watch training videos and learn in-depth information about the product solutions.

[AV Controllers](#) [Accessories](#) [Interfaces](#)

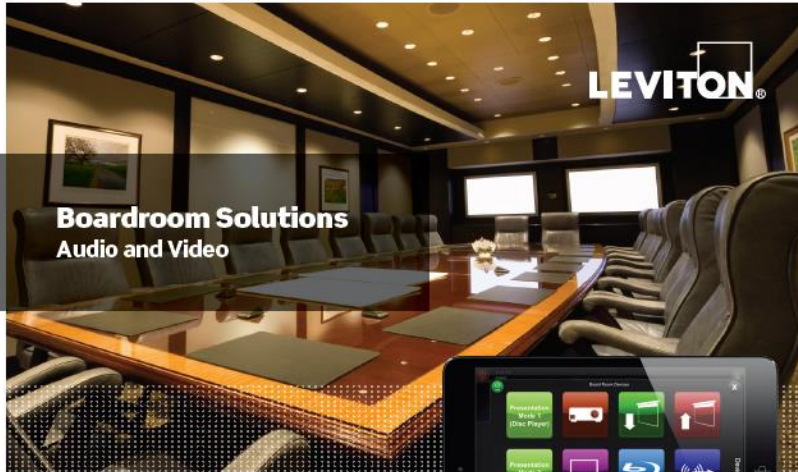
Need Assistance?
Whether you are looking to learn more, receive a quote, find an installer, or how to purchase, a Leviton representative will be able to assist you.
[Have a Leviton representative contact me](#)

Resources
Store
Support Center
Sales Questions

Solution Sheets
Home Theater Stand-Alone Integrate Home Theater Equipment

Case Studies
BitWise Boardroom Solutions
BitWise Classroom Solutions
BitWise Hospitality Solutions

Boardroom/Conference Room Case Study



Boardroom Solutions Audio and Video

Integrated Solutions - Leviton BitWise is All Business in the Boardroom.

When Integrated Communications won a two-year contract with Durham County to automate their office building, they knew it would be a challenge. There were more than 20 conference rooms, and each one required a different set-up. The county government's needs ranged from simple televisions with tabletop connections in some rooms, to complex designs in others that included 80-inch displays with sound reinforcement and education training recording systems.

When Integrated Communications presented several automation options, Durham County officials selected Leviton because of its flexibility and ease of use. Staff members were delighted to learn they could control a complex system with nothing more than a tablet and an app.

"Leviton has enabled us to give the customer one iPad to control the entire Durham County AV system from any location in the campus."

- Jonathan Riggsbee, Integrated Communication Services, Inc.



From a single, easy-to-use control app, end-users can manage every aspect of lighting, AV, room temperature, and more for their business - even if there's more than one location.



WHY CHOOSE LEVITON?

Leviton's BitWise line offers powerful automation controllers, a vast array of GUIs for a completely customizable app interface, and our easy-to-use, no-coding-required Project Editor software. What else could you want? How about:

- No per-device or per-job licensing fees.
- Controllers that are assembled in the United States to ensure the highest standards of quality and reliability.
- Award-winning technical support for when questions arise about tough installs.
- Limitless scalability.
- Apple and Android control apps that are not only free, but can also control more than one location's system on a single device.
- From a single, easy-to-use control app, end-users can manage every aspect of lighting, AV, room temperature, and more for their business - even if there's more than one location.



| CAT. NO. | SOLUTIONS PACKAGE: | |
|----------|--------------------|--|
| BWBC1 | | LEVITON BITWISE (BC1) The BC1 is a powerful audio/video automation controller capable of handling virtually any automation task. |
| BWBC2 | | LEVITON BITWISE (BC2) The BC2 has all the processing power of our BC1 controller, but in a mid-sized form factor. |
| BWBC4 | | LEVITON BITWISE (BC4) The BC4 is perfect for basic single-room solutions, or as an expansion controller in larger projects. |

**We make it easy on our integrators (and their clients) in the boardroom.
Ask us how you can get started.**

Leviton Security & Automation 4330 Michoud Boulevard, New Orleans, LA 70129
Telephone: 1-504-736-9810 • Fax: 1-504-253-2954 • Tech Line (8:30am - 7:00pm E.S.T. Monday-Friday): 1-800-824-3005
Visit our website at: www.leviton.com/automation ©2014 Leviton Manufacturing Co. Inc. All rights reserved.

SAB 10000



Classroom/Education Case Study



Classroom Solutions Audio and Video

Integrated Solutions – Leviton BitWise Earns an A+ in The Classroom.

When Nanpeng Technology snapped up the coveted contract for a brand new college campus in Hong Kong, they knew they were expected to install the best and most reliable automation technology available.

That's why they took advantage of the flexibility of the Leviton BitWise controllers to complete the project. They used BitWise BC1 and BC4 controllers in 21 classrooms, setting them up to control the projector, projector screen, Blu-ray player, presentation switcher, lighting system, volume control, and the system power in each room. They used an additional Leviton BitWise controller to monitor the status of every room's technology, and automate the system shutdown each day. Now it's easy for instructors to give multimedia presentations, and simple for system administrators to monitor technology and energy usage.

The size and complexity of the project was daunting, but the Nanpeng Technology team is convinced BitWise was the right choice. "Network communication was very critical to this project," Vincent Chen, Nanpeng's programmer, explained. "BitWise provided a great platform for us."



From a single, easy-to-use control app, end-users can manage every aspect of lighting, AV, room temperature, and more for their business - even if there's more than one location.

"We had confidence that BitWise could fulfill project needs, and it did."

- Simon Tsai, Chief Technology Officer at Nanpeng Technology

WHY CHOOSE LEVITON?

Leviton's BitWise line offers powerful automation controllers, a vast array of GUIs for a completely customizable app interface, and our easy-to-use, no-coding-required Project Editor software. What else could you want? How about:

- No per-device or per-job licensing fees.
- Controllers that are assembled in the United States to ensure the highest standards of quality and reliability.
- Award-winning technical support for when questions arise about tough installs.
- Limitless scalability.
- Apple and Android control apps that are not only free, but can also control more than one location's system on a single device.
- From a single, easy-to-use control app, end-users can manage every aspect of lighting, AV, room temperature, and more for their rooms or campus - even if there's more than one location.



| CAT. NO. | SOLUTIONS PACKAGE: | |
|----------|---|--|
| BWB1 |  | LEVITON BITWISE (BC1) The BC1 is a powerful audio/video automation controller capable of handling virtually any automation task. |
| BWB4 |  | LEVITON BITWISE (BC4) The BC4 is perfect for basic single-room solutions, or as an expansion controller in larger projects. |

**We make it easy on our integrators (and their clients) in the boardroom.
Ask us how you can get started.**

Leviton Security & Automation 4330 Michoud Boulevard, New Orleans, LA 70129
Telephone: 1-504-736-9810 • Fax: 1-504-253-2954 • Tech Line (8:30am - 7:00pm E.S.T. Monday-Friday): 1-800-824-3005
Visit our website at: www.leviton.com/automation ©2014 Leviton Manufacturing Co. Inc. All rights reserved.

SAB10001



Hospitality (Restaurant) Case Study



Hospitality Solutions Audio and Video

Integrated Solutions - Leviton BitWise is Right at Home With Hospitality.

When Doug Harbert of Harbert Home Systems landed a contract to automate a trendy local restaurant, he knew he wanted to give them more than a remote to control their music and televisions. He planned to give them a system that was reliable, scalable for the future, and included tools that could immediately improve their business.

Harbert selected a Leviton BitWise BC4 controller for AV management for Tavern 109. A new restaurant housed in a historic building, it was important to the establishment's owners that the control system reliably automate TVs and sound equipment without jarring the historical sense of the building. Harbert wall-mounted the BC4 in an out-of-sight cabinet to make the automation system seamless to patrons, set up an iPad to control the entire restaurant, and customized the control interface to match Tavern 109's branding. Now employees can switch TV stations, change the music, and show daily menu specials from one tablet, and Harbert is able to scale the restaurant's system as their needs grow.



From a single, easy-to-use control app, end-users can manage every aspect of lighting, AV, room temperature, and more for their business - even if there's more than one location.

"The staff interacts with the iPad, and it was just about half an hour in terms of system education. I really only had to teach them the interface. They're off and running after that."

- Doug Harbert, owner of Harbert Home Systems

We make it easy on our integrators (and their clients) in the hospitality industry. Ask us how you can get started.




WHY CHOOSE LEVITON?

Leviton's BitWise line offers powerful automation controllers, a vast array of GUIs for a completely customizable app interface, and our easy-to-use, no-coding-required Project Editor software. What else could you want? How about:

- No per-device or per-job licensing fees.
- Controllers that are assembled in the United States to ensure the highest standards of quality and reliability.
- Award-winning technical support for when questions arise about tough installs.
- Limitless scalability.
- Apple and Android control apps that are not only free, but can also control more than one location's system on a single device.
- From a single, easy-to-use control app, end-users can manage every aspect of lighting, AV, room temperature, and more - even if there's more than one location.



| CAT. NO. | SOLUTIONS PACKAGE: | |
|----------|---|---|
| BWBC4 |  | LEVITON BITWISE (BC4) The BC4 is perfect for basic single-room solutions, or as an expansion controller in larger projects. |

Leviton Security & Automation 4330 Michoud Boulevard, New Orleans, LA 70129
Telephone: 1-504-736-9610 • Fax: 1-504-253-2954 • Tech Line (8:30am - 7:00pm E.S.T. Monday-Friday): 1-800-824-3005
Visit our website at: www.leviton.com/automation ©2014 Leviton Manufacturing Co. Inc. All rights reserved.

SAB-10002

House of Worship Case Study



House of Worship Solutions Audio and Video

Integrated Solutions - Leviton BitWise Works Every Day in a House of Worship.

Churches, synagogues, mosques, and other houses of worship require the same level of performance from their automation systems as any for-profit organization. These environments hold unique challenges, however, for the integrator who takes them on. Integrators who choose BitWise Controls will meet the core concerns of their clients.

It's cost-effective. Leviton BitWise offers competitively-priced controllers that can schedule events by time of day as well as by sunrise and sunset. This feature can be used with HVAC and lighting systems for significant savings.

It's reliable. Leviton BitWise products are backed by 20 years of mission-critical control experience, and are trusted globally with managing vital functions.

It's easy to use. Leviton BitWise systems are controlled using intuitive apps on Apple and Android phones and tablets - devices with which both staff and volunteers would almost certainly be familiar.

Lights, shades, sound systems, video, screens, microphones, HVAC systems...and costs. All of a house of worship's automation needs can be easily managed with BitWise Controls.



From a single, easy-to-use control app, end-users can manage every aspect of lighting, AV, room temperature, and more for their business - even if there's more than one location.




WHY CHOOSE LEVITON?

Leviton's BitWise line offers powerful automation controllers, a vast array of GUIs for a completely customizable app interface, and our easy-to-use, no-coding-required Project Editor software. What else could you want? How about:

- No per device or per job licensing fees.
- Controllers that are assembled in the United States to ensure the highest standards of quality and reliability.
- Award-winning technical support for when questions arise about tough installs.
- Limitless scalability.
- Apple and Android control apps that are not only free, but can also control more than one location's system on a single device.
- From a single, easy-to-use control app, end-users can manage every aspect of lighting, AV, room temperature, and more - even if there's more than one location.



| CAT. NO. | SOLUTIONS PACKAGE: | |
|----------|---|---|
| BWBC2 |  | LEVITON BITWISE (BC2) The BC2 has all the processing power of our BC1 controller, but in a mid-sized form factor. |

We make it easy on our integrators (and their clients) supporting houses of worship. Ask us how you can get started.

Leviton Security & Automation 4330 Michoud Boulevard, New Orleans, LA 70129
 Telephone: 1-504-736-9810 • Fax: 1-504-253-2954 • Tech Line (8:30am - 7:00pm E.S.T. Monday-Friday): 1-800-824-3005
 Visit our website at: www.leviton.com/automation ©2014 Leviton Manufacturing Co. Inc. All rights reserved.

SAB-10003



Home Theater Solutions Sheet



Home Theater Stand-Alone Solutions

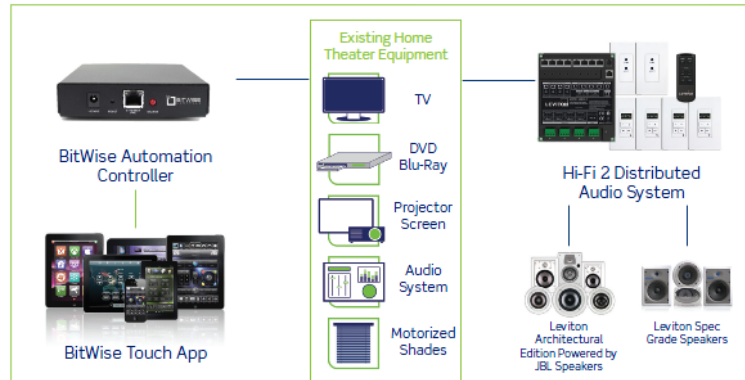


Manage Your Home Theater System With Ease and Comfort

Home theater systems can comprise of many components (TVs, audio systems, Blu-Ray/DVD players, projectors and screens, motorized shades, lighting, and more). Tying them together to operate as a single unit can be very complex. Each component is provided with its own remote, which causes clutter and confusion when searching for the correct remote to control a specific function. Leviton's BitWise Automation Controller eliminates this problem by connecting all components to a single hub, which can be controlled from a single interface. Leviton provides you with a free iOS app for your iPhone, iPad, or iPod Touch, where you can control your entire home theater system with the touch of a button. Customize your interface with Leviton's free Project Editor software.

Features and Benefit

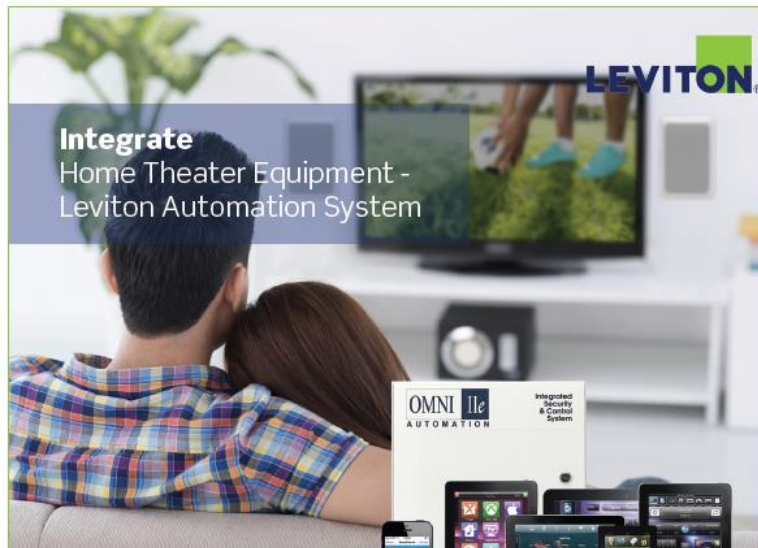
- Stand-alone operation when combined with free BitWise Touch app
- Control from iPhone, iPad, or iPhone Touch
- Use serial, digital, and infrared (IR) ports, as well as relays to control home theater equipment
- Includes a built-in IR library of over 300,000 IR codes
- Free Project Editor software package, which allows full interface customization of layouts, buttons, fonts, colors, and macros



Solution Package

| | |
|--|--|
| | <p>BitWise Automation Controller (BWBC4) The BitWise Automation Controller (BWBC4) provides a stand-alone option to control your existing audio and video equipment in your home theater, when using the free BitWise Touch app. Control AV equipment, motorized screens, window coverings, lighting, and other components to your home theater by using the BWBC4 serial ports, IR ports, I/O ports, and relays. Easily add audio and video components with the built-in AV Library of over 300,000 IR codes or add new codes with the IR Learner. Add IR Flashers (EN928) that attach to the IR Receiver of any AV equipment you wish to control.</p> |
| | <p>BitWise Touch App (Available in iTunes Store) When used with the BWBC4 controller, a free iOS app for iPhone/iPad/iPod Touch can be used to control your home theater equipment. Default templates are provided but may be customized in the provided Project Editor software. The software package includes an attractive standard interface and allows for full customization of layout, buttons, fonts, colors, and macros.</p> |
| | <p>Hi-Fi 2 Distributed Audio System: Amplifier (4x4 - 95A02-3) (8x8 - 95A01-1) Share music and TV audio via Bluetooth (95A04-2) with built-in speakers for a clean, professional appearance. Ensure guests never miss a play of their favorite sporting event or a beat of their favorite tune. The BitWise Automation Controller and Hi-Fi work right along side one another, where the BWBC4 controls the source, and the Hi-Fi shares the audio from that source. A free Hi-Fi 2 iOS app exists for control of source/zone. Add Volume-Source Control stations (95A03-1) and Remote Input Modules (95A04-1) for added convenience.</p> |
| | <p>Leviton Architectural Edition Powered by JBL Speakers Leviton/JBL Speakers are an excellent choice for front home theater installations as well as the best choice for surround-sound use. Their Elliptical Oblate Spheroidal™ (EOS™) Waveguide improves high-frequency sound dispersion allowing the speakers to generate a sharply focused sound field for precise soundtrack imaging. In-Wall (AEI65, AEI80, AEI55), In-Ceiling (AEC65, AEC80, AEM65), Subwoofer (AESUB)</p> |
| | <p>Leviton Spec Grade Speakers When the specs call for quality sound, rely on Leviton's award-winning Spec Grade Sound indoor speaker line for technical innovation and value. In-Wall (SG65-W), In-Ceiling (SGC65-W).</p> |

Home Theater + Automation Solutions Sheet



Integrate Home Theater Equipment - Leviton Automation System



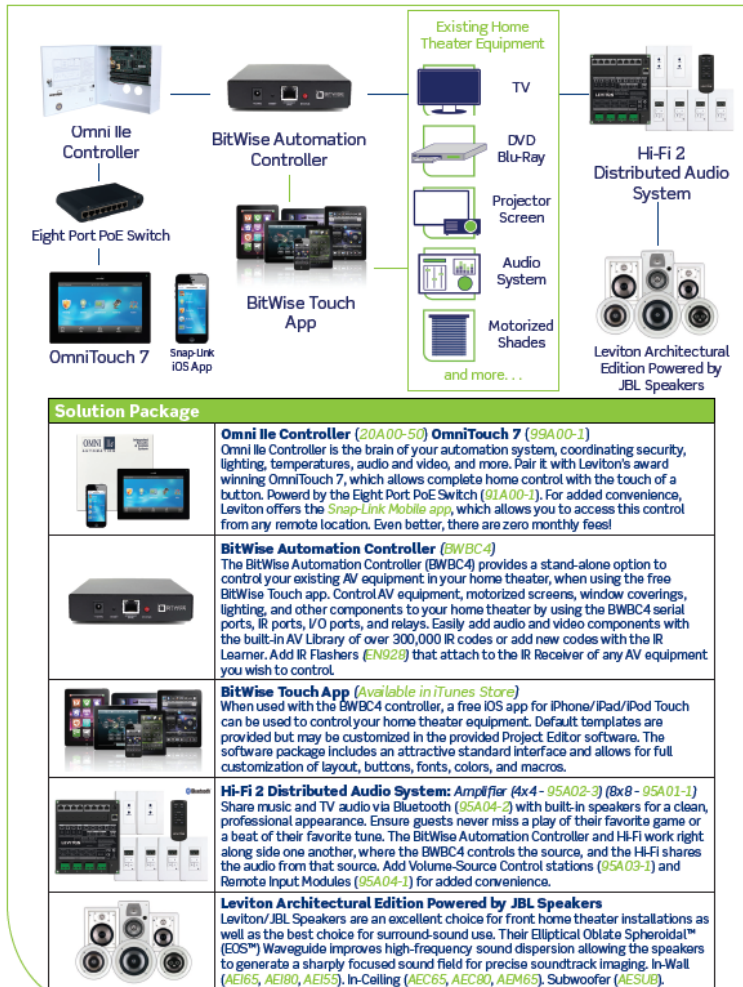
Increase functionality. Create an enhanced lifestyle experience.

Home theater systems can comprise of many components (TVs, audio systems, Blu-Ray/DVD players, projectors and screens, motorized shades, lighting, and more). Tying them together to operate as a single unit can be very complex. Leviton's BitWise Automation Controller eliminates this problem by connecting all components to a single hub, which can be controlled from a single interface.

Adding a Leviton automation system to the mix provides further convenience and control for any home owner, coordinating security, surveillance, lighting, temperatures, audio and video, and more. Again, all can be controlled from a single interface. Leviton provides you with numerous interface options (stationary and remote), which presents flexibility and convenience in controlling your home (OmniTouch 7, Snap-Link Mobile app, BitWise Touch app).

Features and Benefits

- Free BitWise Touch app - specific to home theater control
- Free Project Editor software - customize interface layouts, buttons, fonts, colors, and macros
- Snap-Link Mobile app provides total home control from any remote location (Zero Monthly Fees)
- Control security, surveillance, lighting, temperature/humidity, audio and video, and more from a single interface (stationary and remote).
- Let your automation system do all the work, by programming specific actions based on schedules and events.



BitWise Solutions Guide/Brochure



Table of Contents

Solution Sheets

| | |
|--|-------|
| Boardroom | 1-2 |
| Classroom | 3-4 |
| Hospitality | 5-6 |
| House of Worship | 7-8 |
| Stand-Alone Home Theater | 9-10 |
| Home Theater Integrated with Home Automation | 11-12 |



BitWise CEPro Campaign

■ White Paper: 8 Tips

- Brand New, Unique Content

■ Polled BitWise Employees:

- “Choose the proper platform.”
- “Properly set customer expectations...”
- “Come to the job site prepared.”
- “Take advantage of time savers!”
- “Let KISS define your designs.”
- “...shouldn’t rely on router provided by ISP.”
- “Train the customer.”
- “Shameless promotion works.”

■ Available at Leviton.com/Automation

Top Eight Tips for AV Automation and Control

So you're about to begin an automation job, controlling the TV, Blu-Ray player, Xbox, maybe some lighting and temperature as well for the full experience. What are some tried and true tips that you need to learn before coaxing customers, pitching a job, and integrating the components? We polled the experts at BitWise Controls, a newly acquired Leviton product family, for their experienced input to save you time, money, and frustration.

Presented by:



Produced by CE Pro • October 2014
Top Eight Tips for AV Automation and Control
© 2014 EH Publishing

Additional Training Resources

■ BitWise Training Videos

- Getting Started: <http://www.screencast.com/t/N7Cw231pKb>
- Adding Controllers to a Project: <http://www.screencast.com/t/gVI5xzFooD>
- Adding IR Controllers: <http://www.screencast.com/t/d3II1GZ0a2c8>
- Macros and User Variables: <http://www.screencast.com/t/j9yZZUUR>
- GUIs and Templates I: <http://www.screencast.com/t/YhEAjc83A5>
- GUIs and Templates II: <http://www.screencast.com/t/WvQb7wL6w3>

■ Vertically-Focused 4-Hour Trainings Coming Soon!

■ New Orleans Hands-On Training (Omni-focused) will now include BitWise

- January: 30 Min Overview (This PPT)
- Feb: Expanded Overview (1-2 Hours)
- March: Will have BC2's at each station



Thank You

Leviton.com

