

# Omni Integration into BitWise AV Systems

Sales + Technical Training

Greg Rhoades, Director of Marketing, Security & Automation

August 4, 2015

# Product Information

Omni Integration into BitWise AV Systems

# What are Omni and BitWise Systems?

## ■ BitWise™ AV Controllers

- AV-centric automation systems
- Customizable interfaces
- Use an iPad to control all AV components and more!



## ■ Omni® Security & Automation Systems

- Hundreds of connected devices (*“Swiss Army Knife”*)
- Security
  - UL Listed Burglary/Fire for Residential
  - UL Listed Burglary for Commercial
  - Wireless sensors, access control, video surveillance, etc!
- Distributed Audio
- Remote Access
- IDEAL FOR SYSTEMS INTEGRATORS!



# Integration Features + Benefits

- **Omni Integration:** Project Editor now provides built-in support for Omni controllers, including GUI content and commands for Security, Lights, HVAC, and more
  - Updated Controller Firmware: Enables BC1 or BC2 controller macros to be triggered by Omni events, and improves memory management and overall performance. BC4 integrates but does not utilize macro commands.
- **OmniTouch 7 Graphics:** Free download of “default” icons/backgrounds. Allows integrators to customize OmniTouch 7 interfaces for both touchscreens and BitWise apps (when used with BitWise systems)
- **OmniTouch 7 Intercom:** Make/receive calls from your OmniTouch 7 touchscreen to and from a compatible door station
- **Omni-Bus Integration Module:** Easily integrate Leviton’s DIN Rail Omni-Bus Lighting Control System



## Why was this Brought to Market?

- Two popular platforms unifying to provide a comprehensive automation system controlling security, lighting, temperatures, audio/video, and more.
- Ability to create custom Touchscreen interfaces is a desire of the integration community, adding value and personality to each job
- Leviton wanted to craft a tight integration that was available free
- Leviton is committed to growing the BitWise eco-system, thus the intercom and Omni-Bus integrations



## What are the Top “Talking Points?”

- Free upgrades to existing platforms provides extra value to the installation channel
  - Omni integration is native and free
  - OmniTouch 7 graphics are a free download
  - Omni-Bus module is a free download
  - Intercom is a free integration
- Easy process to integrate systems and create truly custom solutions and interfaces.
- “Omni” Integrators have tied in AV systems including Leviton’s own HTX2 and BitWise for years, especially in light commercial. Previously, this was either done via a paid integration module or a third party system.

# Where are they Used?

- Residential
- Retail Stores
- Restaurants + Lounges
- Offices
  - Dental
  - Doctor
- Warehouses
- Lobbies
- Hotels + Hospitality
- Franchise Locations
- Assisted Living
- MDUs



# Product Sales Information

Omni Integration into BitWise AV Systems



# Products Needed for Omni/BitWise Integration

## ■ Leviton Security and Automation hardware:

- OmniPro II
- Omni IIe
- Omni LTE
- OmniTouch 7 Touchscreens

## ■ Leviton BitWise hardware:

- BC1
- BC2
- BC4
  - Does not utilize macros

## ■ Leviton Security and Automation software:

- Dealer's Edition PC Access

## ■ Leviton Bitwise software:

- Project Editor (1.9.111)



# Prerequisites: Omni/BitWise Integration

## ■ For the Omni controller:

- Using Dealer's Edition PC Access 3, set up your configuration file for the Omni controller, i.e. all lighting units, zone names, etc.
- Omni controller should be on the same network as the BitWise controller
- Write down the IP address and both Encryption Keys

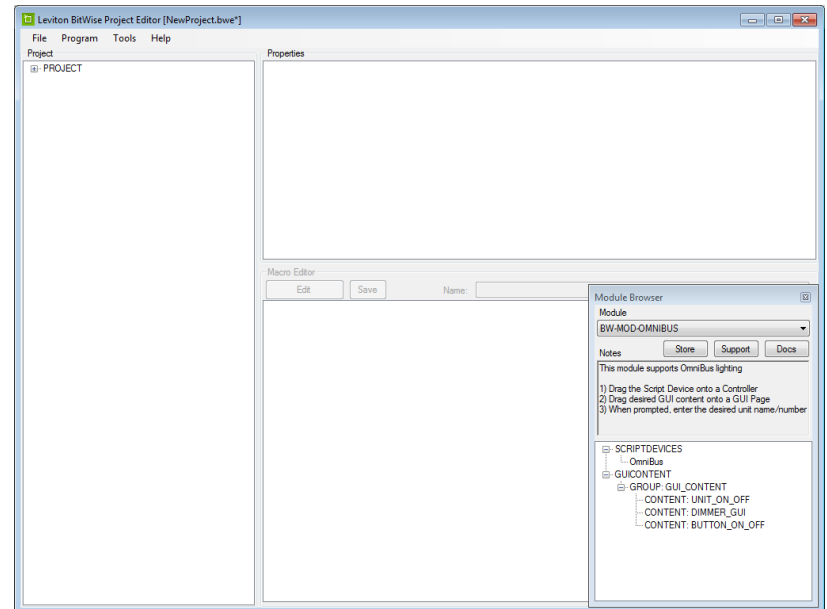


## ■ For the BitWise controller:

- Bitwise controller should be on the same network as the Omni controller
  - Must be a network where you can discover devices
- If possible, identify an available IP for assignment to the BitWise controller.

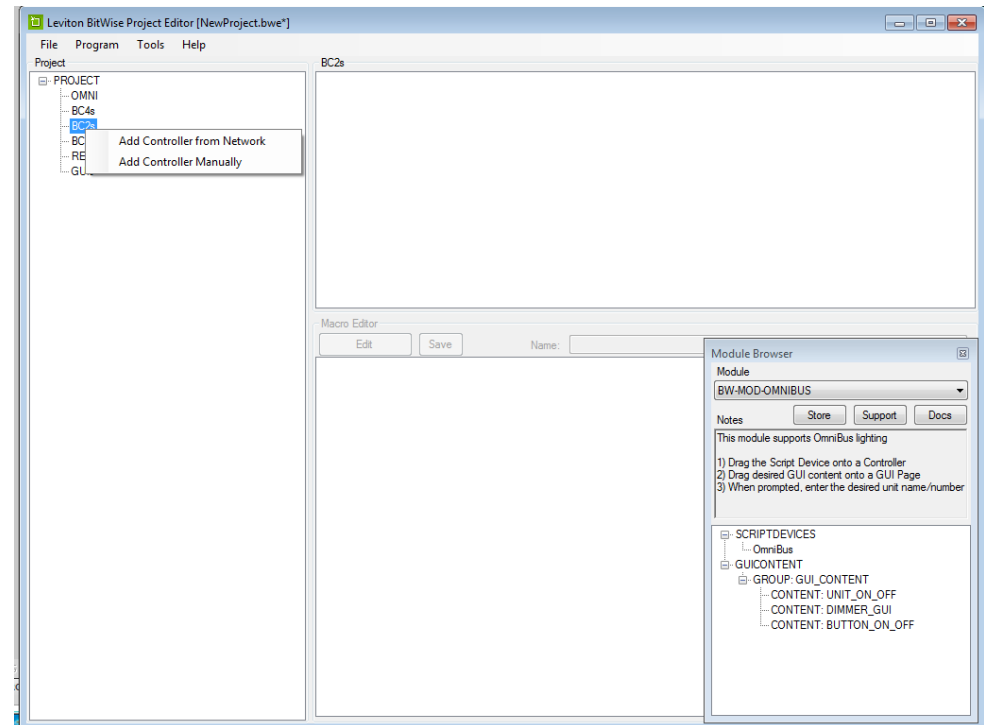
# Omni/BitWise Integration

- Launch BitWise Controls Project Editor (PE) software.
- For our session, we will show the integration of a BitWise BC2 with our OmniPro II
- Expand the + Project tab



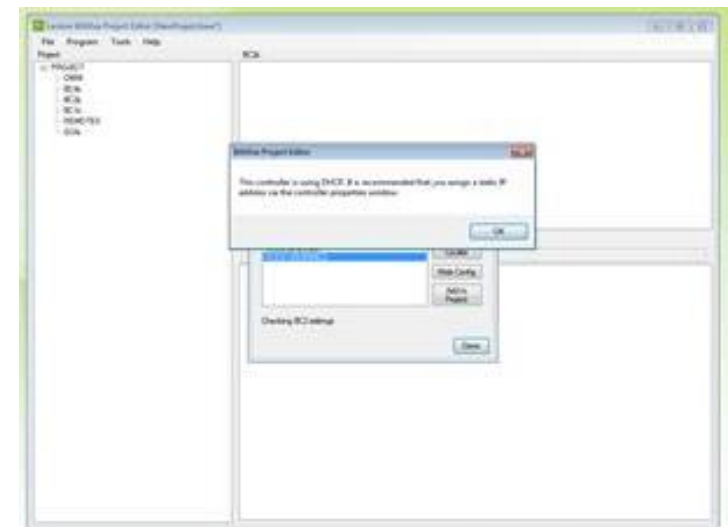
# Omni/BitWise Integration

- Upon expanding, you can see all our BitWise controllers along with the Omni, Remotes and GUIs available for selection.
- As stated previously, for this training, we will select the BC2.
- We select *Add Controller from Network*



# Omni/BitWise Integration

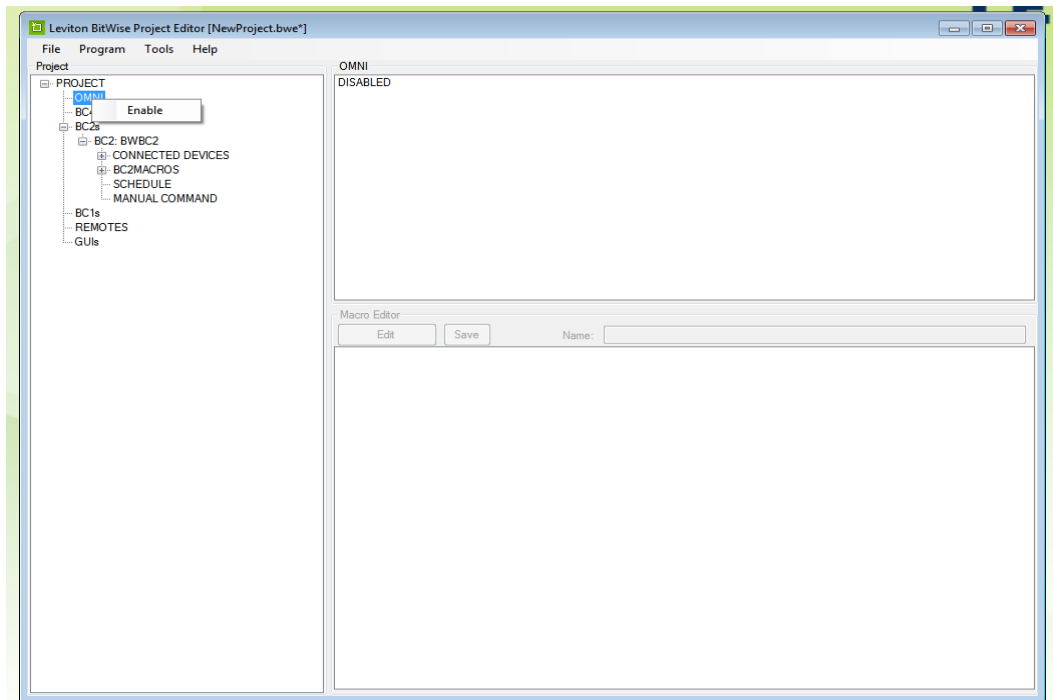
- When you add the device, BitWise BC2, you will be notified that you will need to set up a static IP.
- If you had previously identified an available IP, input it now or you can add one later.





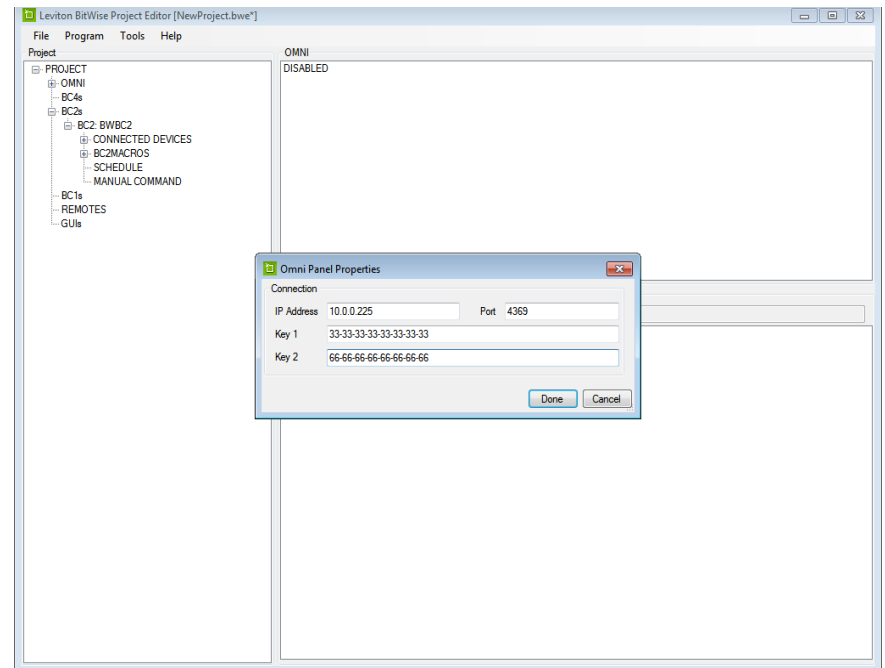
# Omni/BitWise Integration

- We are now ready to add the Omni panel
- Select Omni, press Enable



# Omni/BitWise Integration

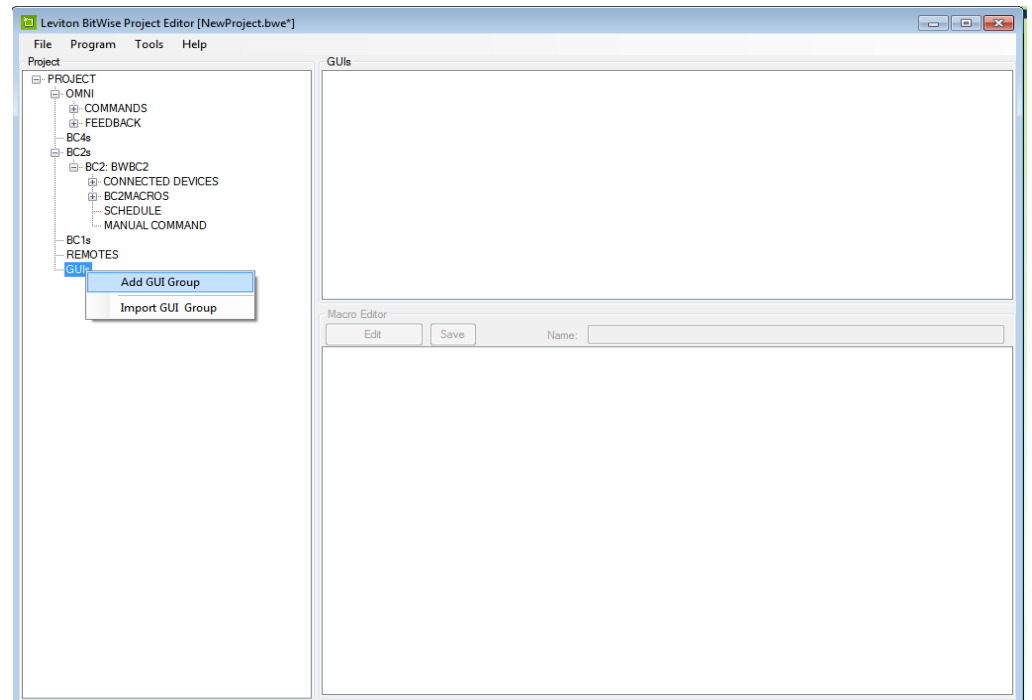
- Populate the Properties Panel with the Omni IP address and Omni Encryption Keys.
  - Update port if necessary.





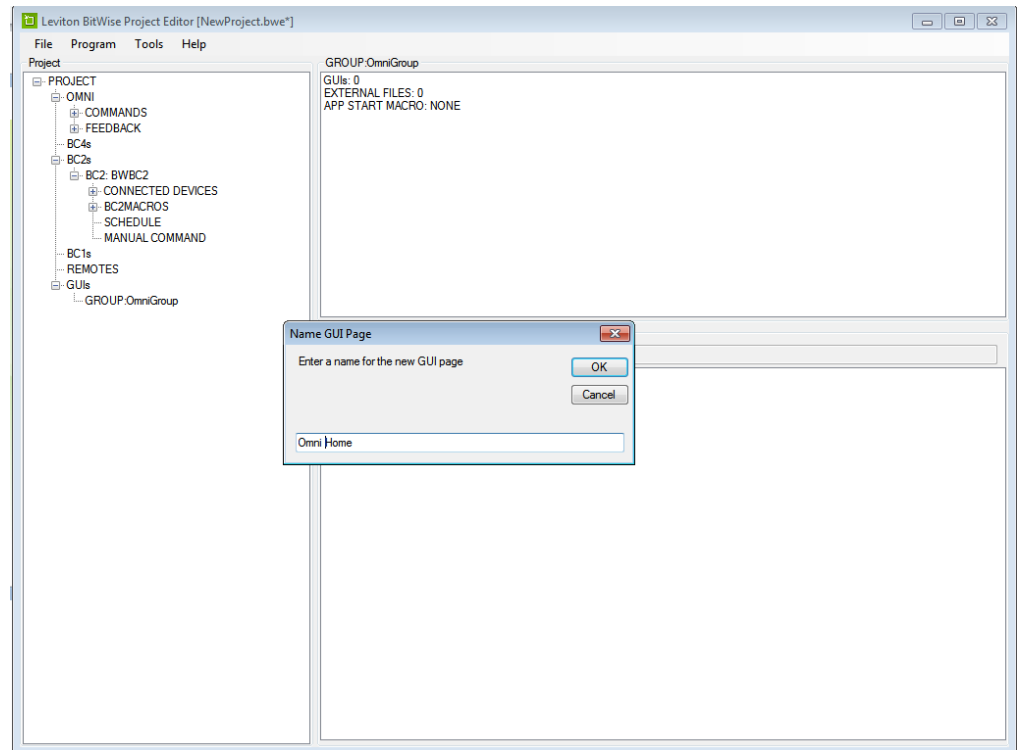
# GUI Group Select

- We now add a GUI group to our project.



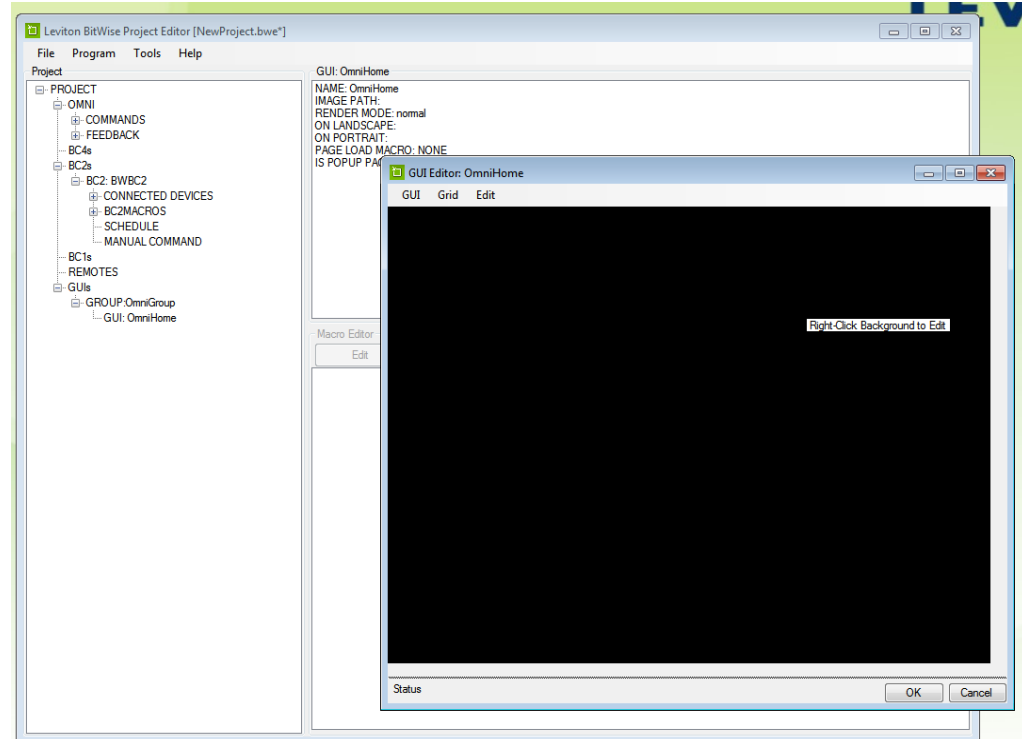
# GUI Group: GUI Page

- Now add a GUI Page to this GUI Group
- Enter a Name
  - We input Omni Home



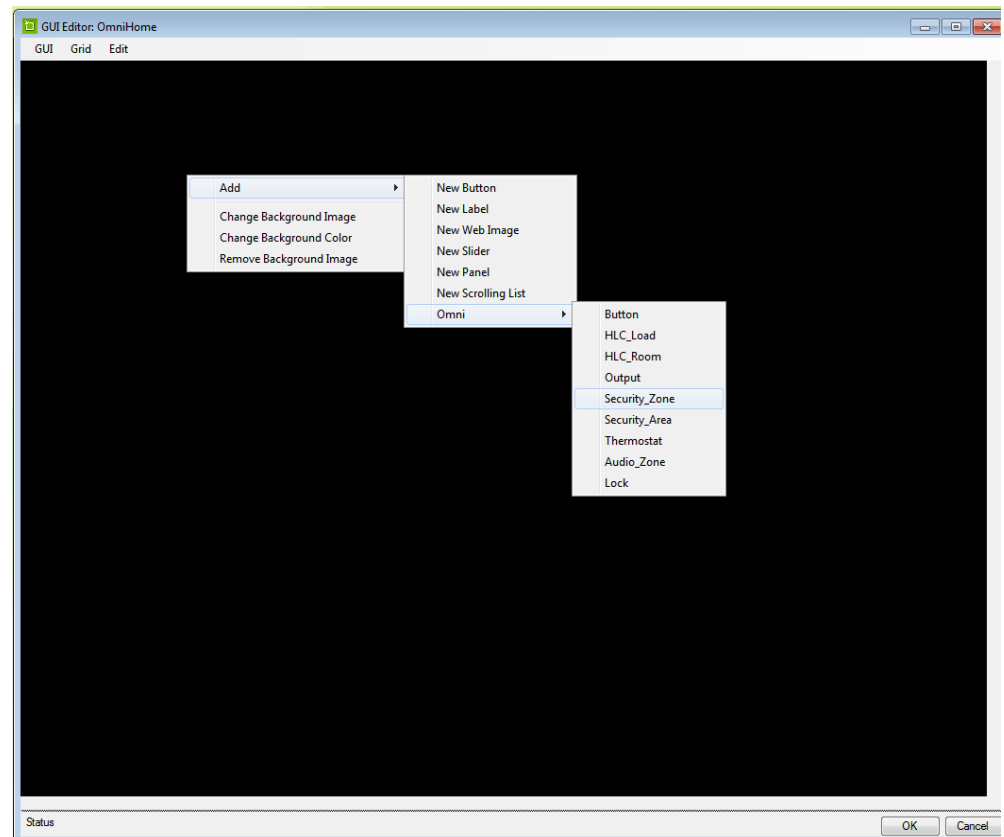
# GUI Group: GUI Page

- Now double click the GUI page or right click and select Edit.
- The GUI Edition screen now appears



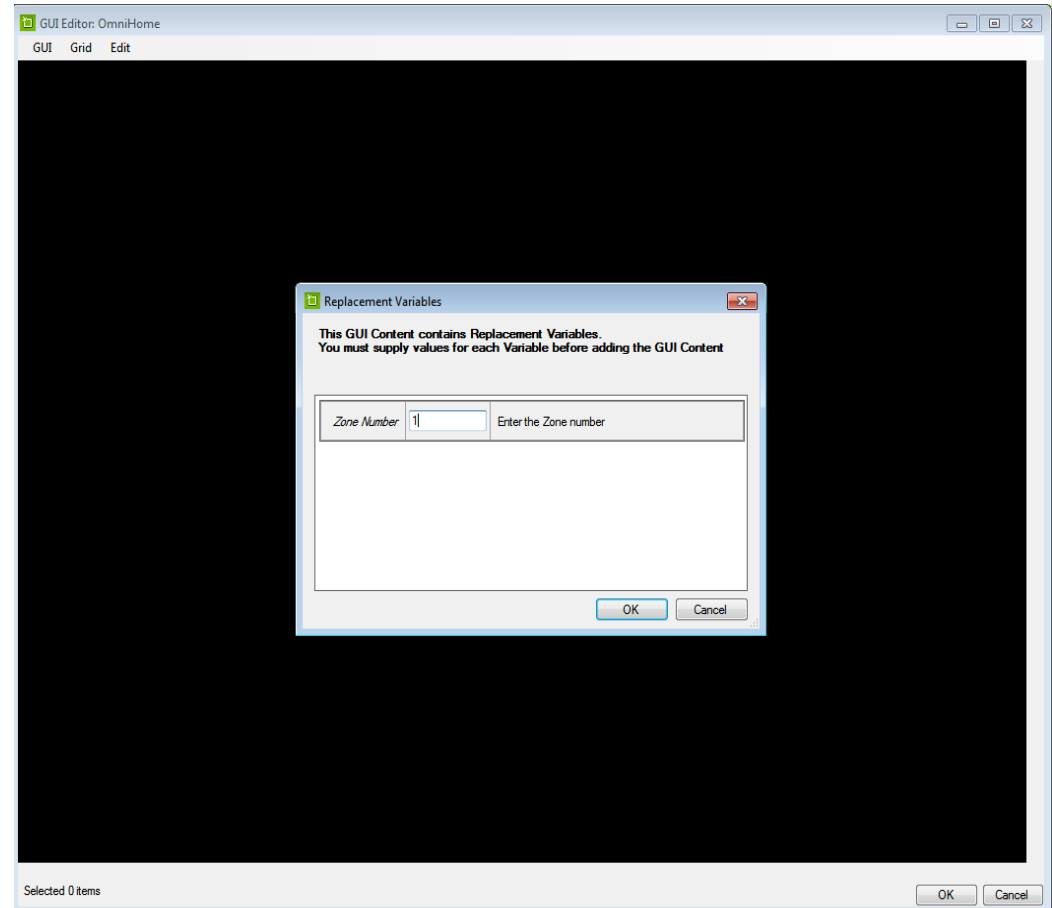
# GUI Editor

- In your GUI Editor screen, right click > Add > Omni > choose a command, i.e. Security Zone
  - This should correlate to your Omni PC Access File



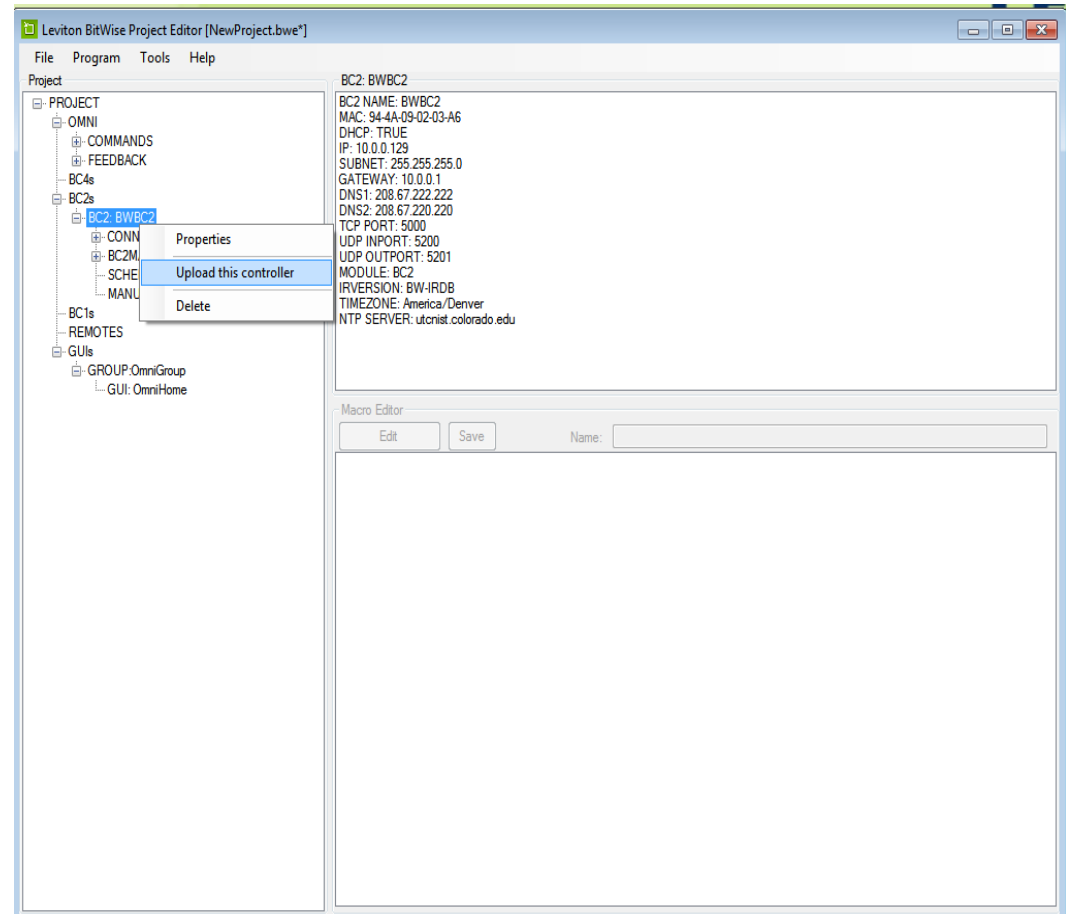
# GUI Page – Omni Integration

- At this time, you will associate items from your Omni panel/PC Access file to the GUI Editor page.
- Once you have populated your GUI page, press OK at the bottom right of the page.



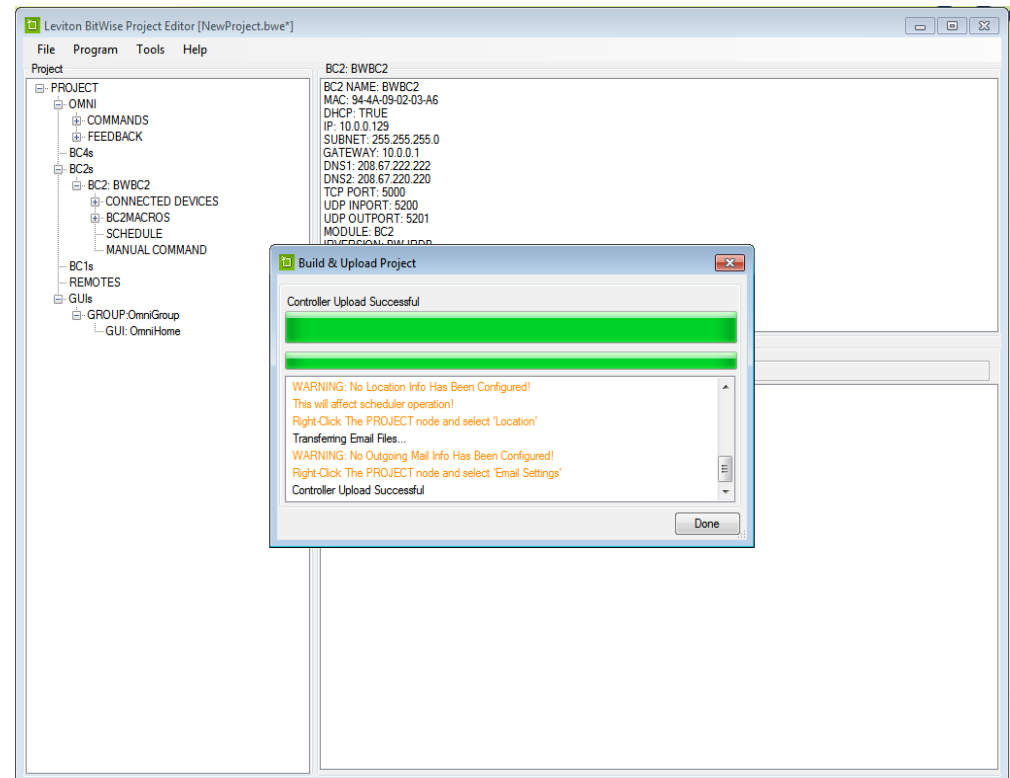
# Upload File

- Now we upload our BitWise Project Editor file to the proper BitWise controller.
- Highlight BC2 and select “Upload this controller”



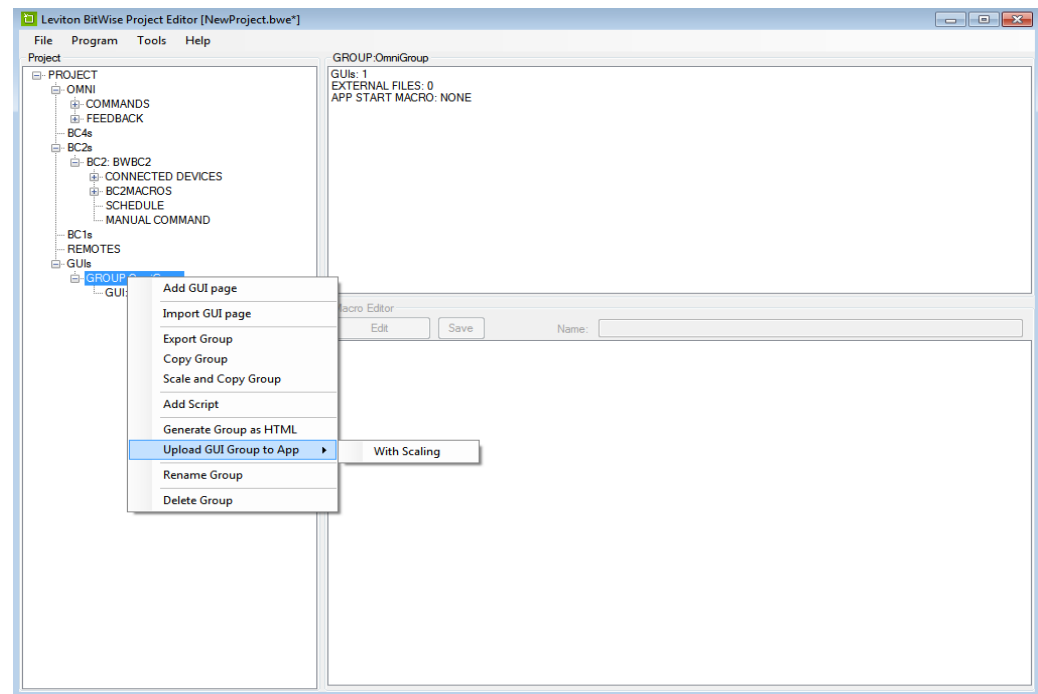
# Upload File: Success

- If the upload is successful, you will get the following pop-up screen with the final line stating “Controller Upload Successful”



# Load to Application

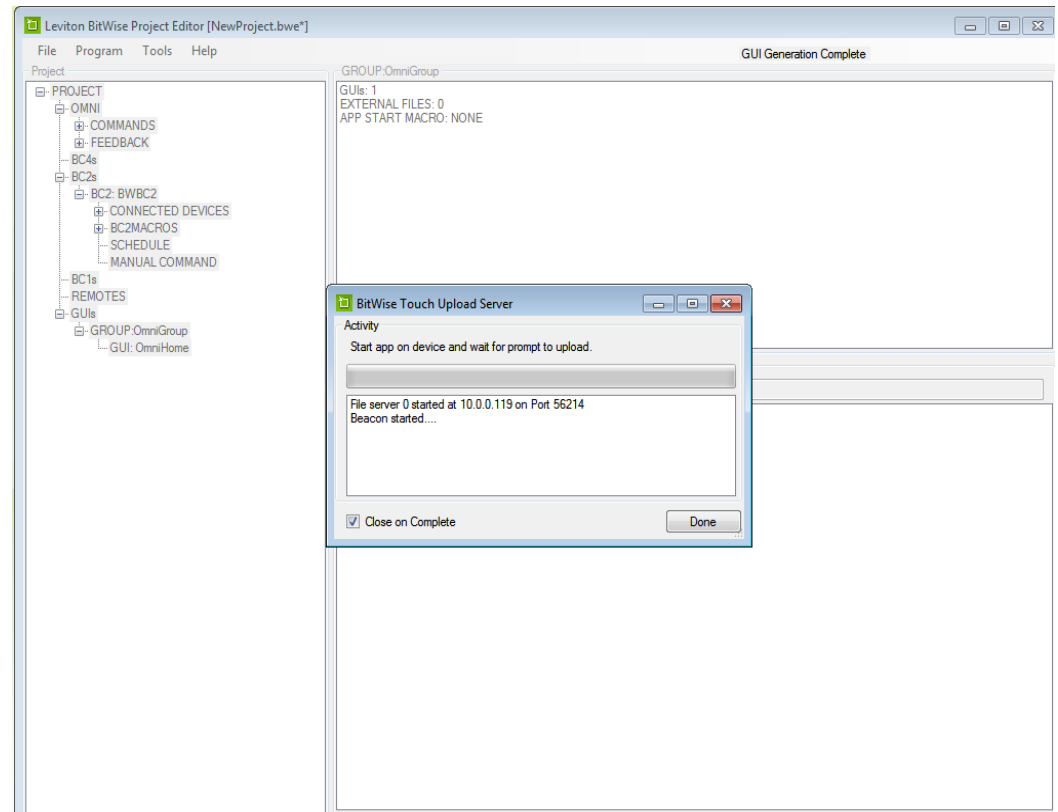
- We are ready to upload to the application.
- Right-click GUI Group
  - Select “Upload GUI Group to App”





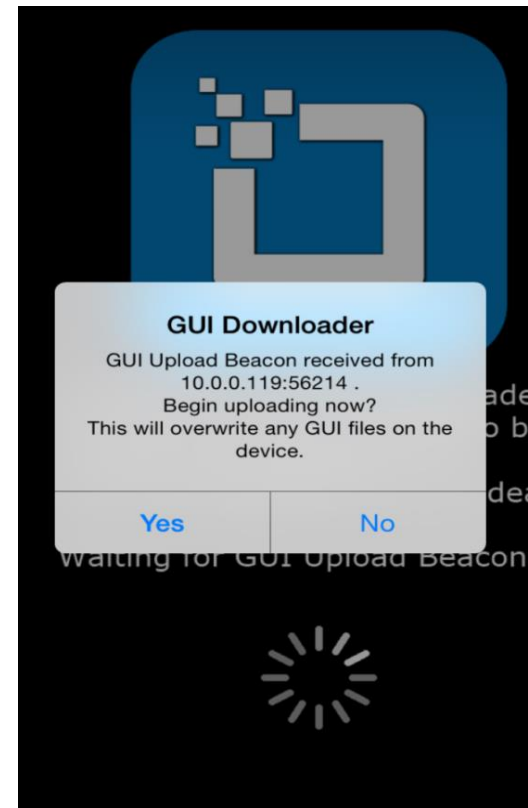
# Upload Beacon

- The Upload Beacon pop-up window appears
- Start the app on the tablet/smartphone device and wait for the prompt to upload
- Status bar will denote activity and can close upon completion



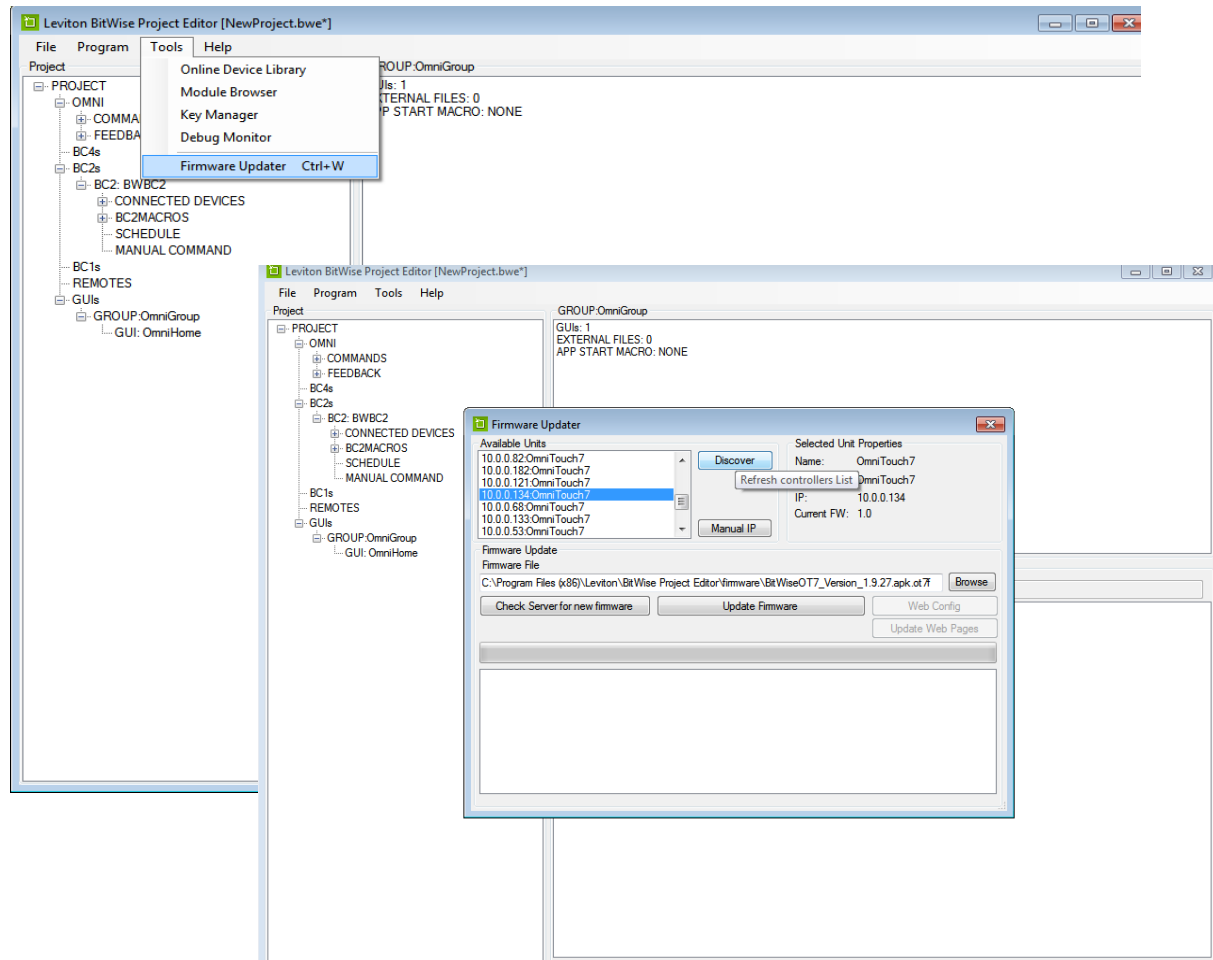
# Upload Beacon

- Once the beacon is engaged, you will need to start the download on your smartphone/tablet
  - Note: downloading a new GUI will overwrite any existing GUI files on the device



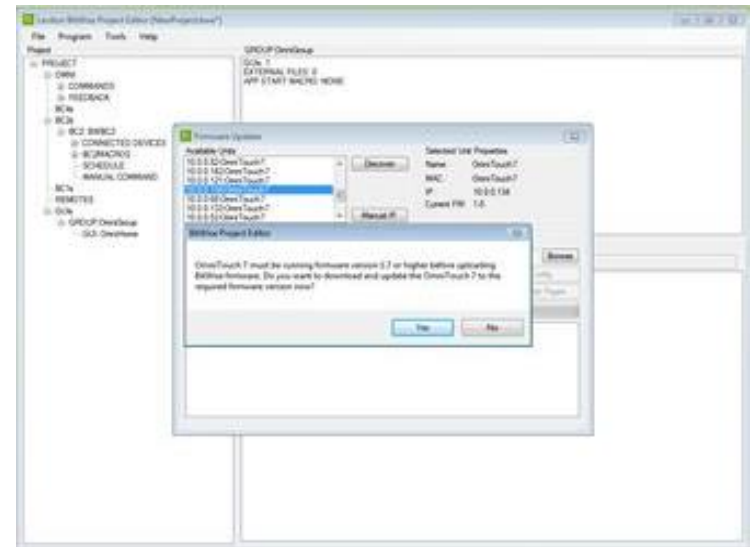
# OmniTouch 7 Touchscreen Integration

- For the OmniTouch 7, go to Firmware Updater and discover.
- All OmniTouch 7 touchscreens on the network will be displayed in the Available Units list.



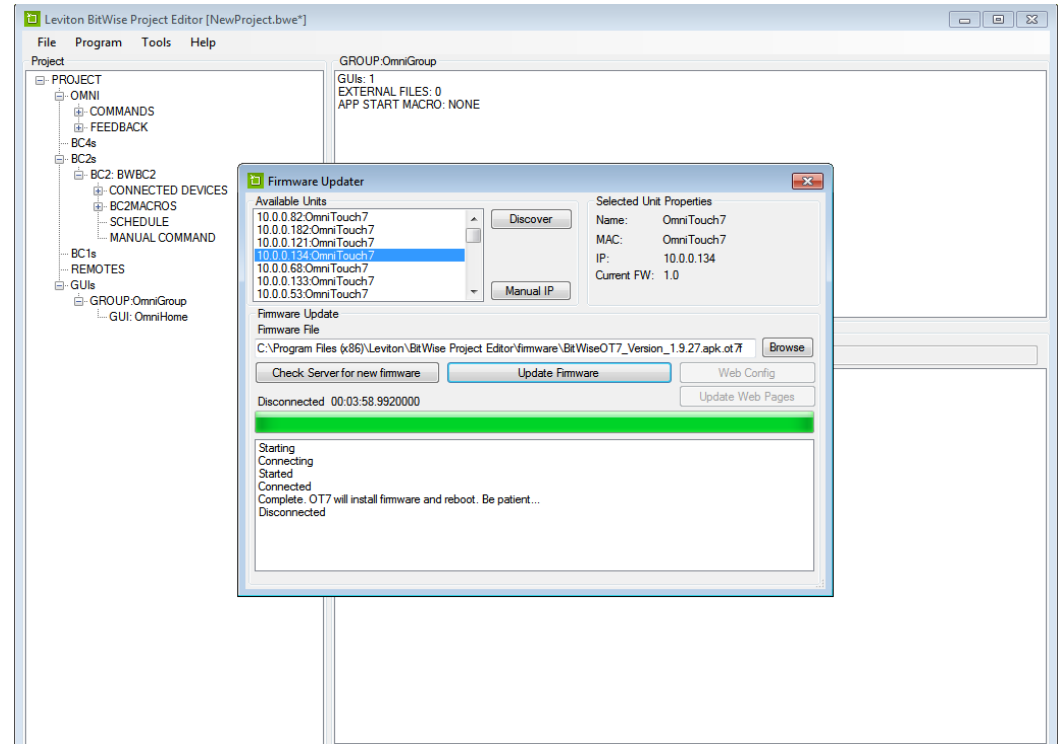
# OmniTouch 7 Touchscreen Verification

- To update to BitWise-ready firmware, you will need to have an OmniTouch 7 Touchscreen with firmware 1.7 or greater.
- If it is not up to date, Project Editor will update the underlying OmniTouch 7 firmware first, then update BitWise Controls OT7 firmware.
- Follow the on-screen prompts



# OmniTouch 7 Touchscreen Verification

- Upon completion of the firmware updates you will see the following screen
  - Status bar and text box denote progress



# OmniTouch 7 Beacon Interaction

- Once the firmware is up to date, and the BitWise Omni Touch 7 firmware has loaded to the touchscreen: Follow the prompts in Project Editor (beacon request).
  - Once you complete this segment, you will be able to select your Home Page



# OmniTouch 7 Beacon Interaction

- This is confirmation that your GUI is loaded correctly.
- Select your Home Page, verify that your example icon is present and communicating with the controller.
- If you have a zone as we have in this example, place a resistor across the zone.
  - Does the icon change from Not Ready to Secure?
    - If so, you are ready to add the reset of your project.
    - If not, please verify your steps.
- Once you have verified your initial GUI load, now you are ready to build and finish your project.



# Technical Installation Information

OmniTouch 7 Graphics – HTX2 GUI



# OmniTouch 7 Graphics Package Examples



# OmniTouch 7 Graphics (HTX2) Installation Notes

<http://store.bitwisecontrols.com>

- Sign up and await Leviton approval
- Won't be able to download/see pricing without approval

Search "GUI Templates" for the HTX2 Package

Free Download

- Price will display as \$0.00

Press Add to Cart

**LEVITON**  
BitWise Hardware | Project Editor Modules | GUI Templates

Shopping Cart: 0 Item(s) - \$0.00  
You are logged in as [Horace](#) (Logout)  
Home | My Account | Shopping Cart | Checkout

Home > GUI Templates > GUI Templates - "HTX2" by HAI

## GUI Templates - "HTX2" by HAI

User Interface Template Package

Developer: HAI  
Availability: Download  
Dealer Price: \$0.00

[Add to Cart](#)

**IMPORTANT NOTE:** This item is developed and supported by a third-party developer. For technical support related to this item, you must contact HAI.

**Description** | **Related Products (4)**

These templates were included free of charge with the HTX2 and have been made available for training and basic installations

Updated 6/4/15

- Now includes OmniTouch 7 icons & backgrounds

**Featured Products:**

- Room Remote \$95.99 [Add to Cart](#)
- Sonos Module by Push Controls \$99.00 [Add to Cart](#)
- Leviton Security & Automation (HAI) Module by Aldous Systems \$150.00 [Add to Cart](#)

Success: You have added [GUI Templates - "HTX2" by HAI](#) to your [shopping cart](#)!

# OmniTouch 7 Graphics (HTX2) Installation Notes

- When ready, press the “Checkout” button
- Enter Billing Details, Payment (Free Checkout)
- Confirm Order (\$0.00)

The screenshot displays the Leviton website's shopping cart interface. At the top, the Leviton logo is visible on the left, and the shopping cart summary 'Shopping Cart 1 item(s) - \$0.00' is on the right. A search bar and user login information ('You are logged in as Horace (Logout)') are also present. Below the navigation bar, the page title is 'Shopping Cart (0.00lb)'. A table lists the cart item:

| Image | Product Name                | Model        | Quantity | Unit Price | Total  |
|-------|-----------------------------|--------------|----------|------------|--------|
|       | GUI Templates - HTX2 by HAI | gul-hai-htx2 | 1        | \$0.00     | \$0.00 |

Below the table, there is a section for 'Coupons & Shipping Estimates' with a 'Use Coupon Code' input field. At the bottom right, the 'Sub-Total: \$0.00' and 'Total: \$0.00' are displayed. Two buttons, 'Continue Shopping' and 'Checkout', are located at the bottom of the cart area. The footer contains the copyright information: '© 2014 Leviton Manufacturing Co., Inc. All rights reserved. Leviton'.

# OmniTouch 7 Graphics (HTX2) Installation Notes

## Confirmation Message Displayed

- Click the “Downloads” page link
- Click the “Download” link under the Product Files column, as shown.
- Click Save File

### Your Order Has Been Processed!

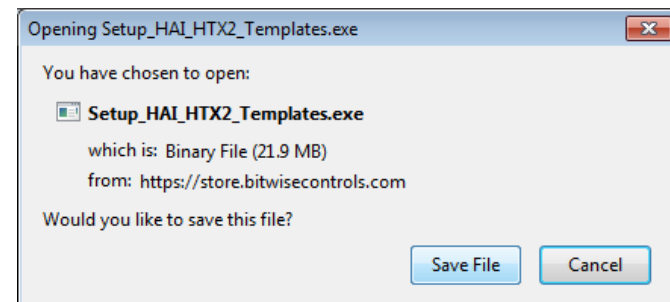
You should receive an email notification shortly.

You can view your order history by going to the [my account](#) page and by clicking on [history](#).

If your purchase has an associated download, you can go to the account [downloads](#) page to view them.

Thanks for your order!

[Continue](#)



## Account Downloads

Order ID: 11249

Size: 21.89MB

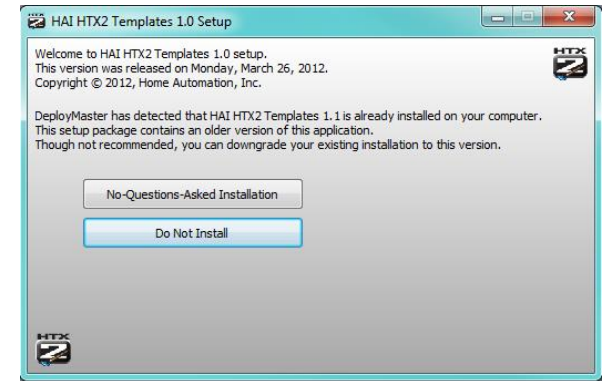
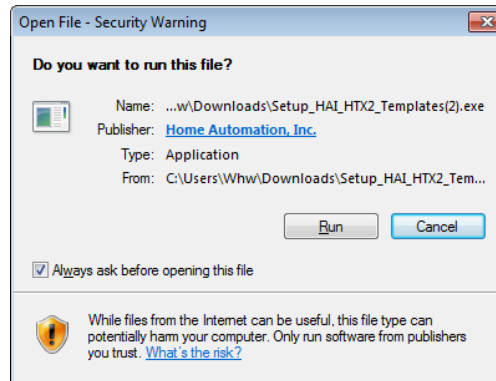
Name: gui-hai-htx2  
Date Added: 07/30/2015

Remaining: 5

Product Files:  
[Download](#)

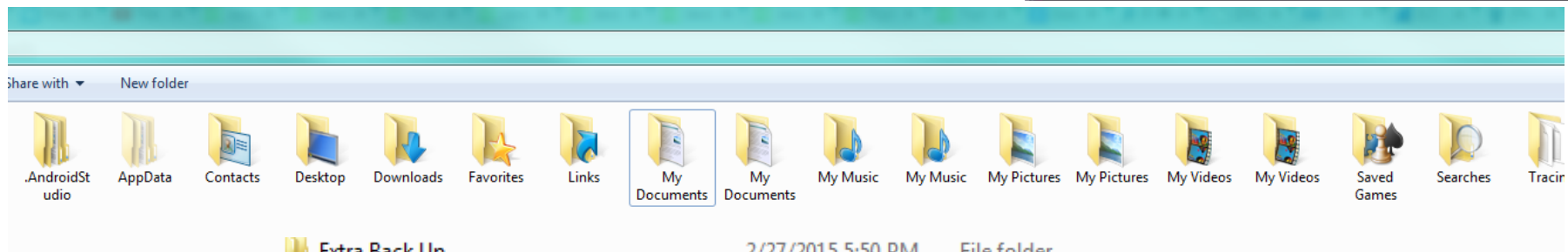
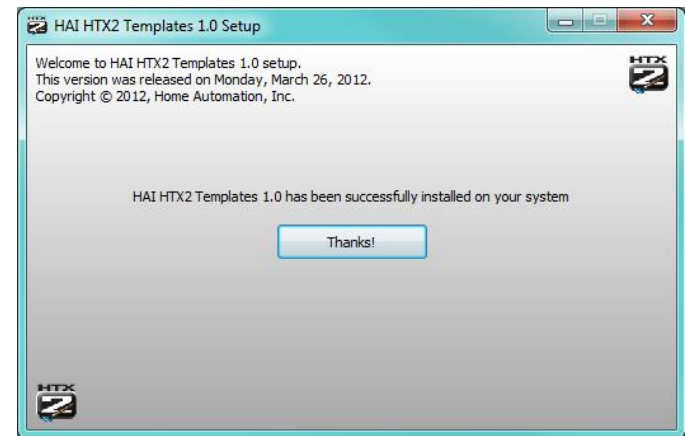
# OmniTouch 7 Graphics (HTX2) Installation Notes

- Run the file
- Click “No Questions Asked Installation”
- Read and agree to the software license agreement
- Leviton employees must request administrative rights/access via support ticket
  - Right click and run as administrator
  - Contact IM



# OmniTouch 7 Graphics (HTX2) Installation Notes







- Confirm Setup via clicking “Thanks!”
- Access the downloaded GUI’s via “My Documents” → HAI → HTX2 → Templates

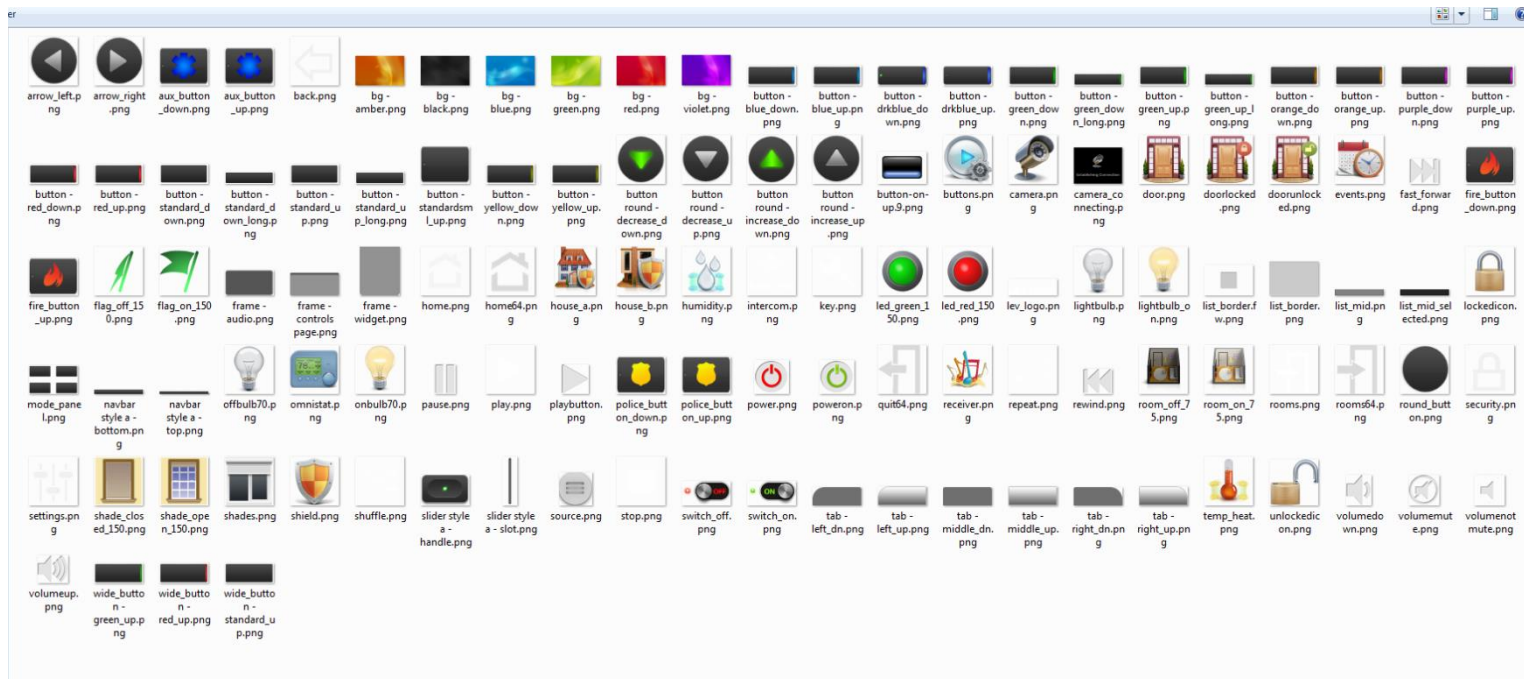


|               |                   |             |
|---------------|-------------------|-------------|
| Extra Back Up | 2/27/2015 5:50 PM | File folder |
| HAI           | 6/3/2015 11:48 AM | File folder |
| Leviton       | 4/13/2015 4:18 PM | File folder |

| Name              | Date modified     | Type        |
|-------------------|-------------------|-------------|
| Automation Studio | 9/16/2013 8:50 AM | File folder |
| Hi-Fi 2           | 6/3/2014 1:10 PM  | File folder |
| HTX2              | 6/3/2015 11:48 AM | File folder |
| PC Access         | 7/22/2015 2:00 PM | File folder |
| ZigBee Updater    | 5/7/2015 10:09 AM | File folder |

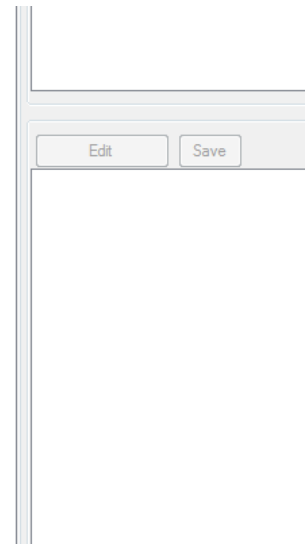
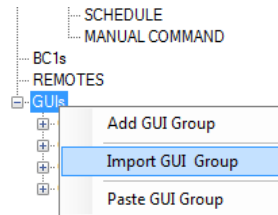
# OmniTouch 7 Graphics (HTX2) Installation Notes

|   |                   |             |          |
|---|-------------------|-------------|----------|
|  iPad Icons                        | 6/3/2015 11:48 AM | File folder |          |
|  iPhone Icons                      | 6/3/2015 11:48 AM | File folder |          |
|  OminTouch 7 Icons                 | 6/3/2015 11:59 AM | File folder |          |
|  GUI_GROUP_HAI iPad.grl            | 3/15/2012 3:15 PM | GRL File    | 2,269 KB |
|  GUI_GROUP_HAI iPhone.grl          | 3/15/2012 3:15 PM | GRL File    | 2,172 KB |
|  GUI_GROUP_OmniTouch7_Examples.grl | 6/1/2015 12:00 PM | GRL File    | 5,076 KB |



# OmniTouch 7 Graphics (HTX2) Installation Notes

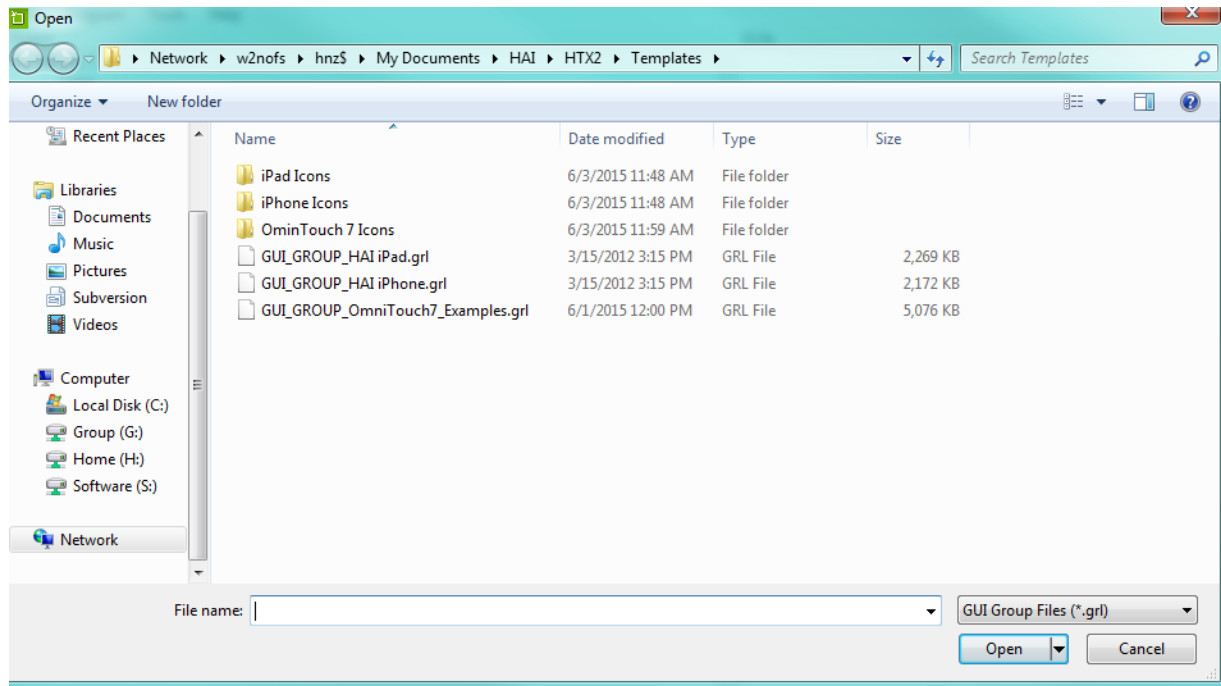
- To add new GUI to your BitWise controller, Import the GUI Group in Project Editor Software via the left-hand tree menu





# OmniTouch 7 Graphics (HTX2) Installation Notes

- Select the .GRL file
- We will select GUI\_Group\_OmniTouch7\_Examples.grl
- Press Open

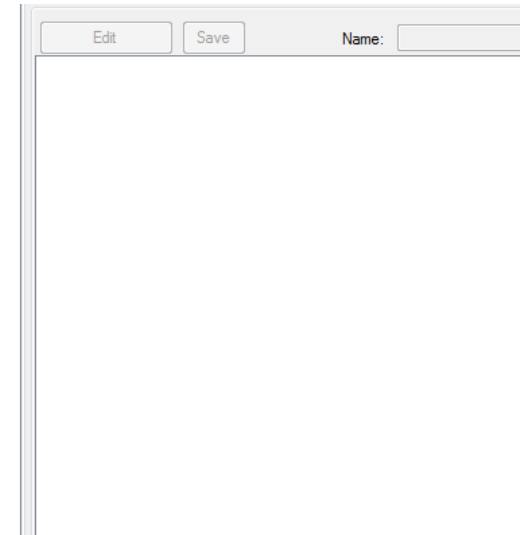


# OmniTouch 7 Graphics (HTX2) Installation Notes

■ OmniTouch 7 GUI Group will now be available via the tree menu

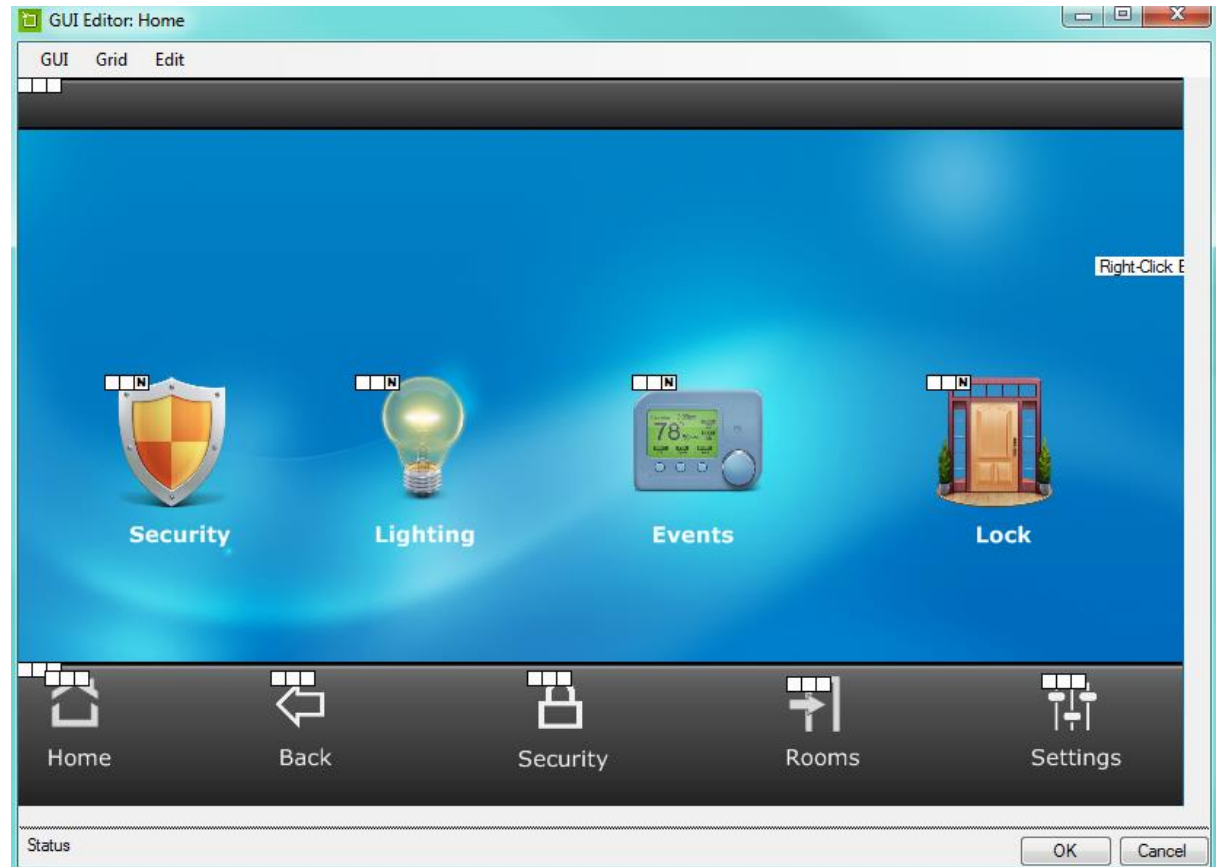
- Icons
- Backgrounds
- Buttons
- Sliders
- Etc

```
GROUP: Tablet Content
GROUP: Phone Content
GROUP: iPad_Test
GROUP: OmniTouch7_Examples
  GUI: Home
  GUI: Photo_Icons
  GUI: BackgroundPanels
  GUI: Buttons&Sliders
  GUI: Icons
  GUI: BlueBackGround
  GUI: AmberBackGround
  GUI: GreenBackGround
  GUI: RedBackGround
  GUI: VioletBackGround
  GUI: Black_BackGround
```



# OmniTouch 7 Graphics (HTX2) Installation Notes

- Example of file built using HTX2 GUI components
- Page 1 example shown



# Technical Installation Information

Omni-Bus Module Integration into BitWise

# Omni-Bus Module Installation Notes

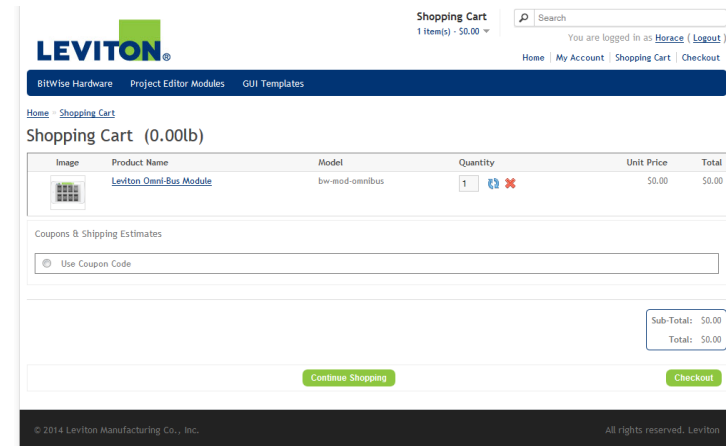
- <http://store.bitwisecontrols.com>
- Search “Project Editor Modules” for the Leviton Omni-Bus Module.
  - Located under “Home Control” and then “Lighting” categories
- Free Download
  - Price will display as \$0.00
- Press Add to Cart

The screenshot shows the Leviton website interface. At the top right, there is a shopping cart icon showing '0 item(s) - \$0.00' and a search bar. Below the search bar, it says 'You are logged in as Horace (Logout)'. The navigation bar includes 'Home', 'My Account', 'Shopping Cart', and 'Checkout'. The main content area is titled 'Leviton Omni-Bus Module' and includes a 'GUI Module Authentication Key - Single Project' section. The price is listed as 'Dealer Price: \$0.00'. There is an 'Add to Cart' button. Below the product image, there is a table with tabs for 'Description', 'Related Products (7)', 'Compatibility', 'Supported Protocols', 'Requirements', and 'Limitations'. The 'Description' tab is active, showing the text: 'This module allows control and feedback from Leviton's Omni-Bus control network.' Below this, there is an 'About Omni-Bus' section with a paragraph of text.

✓ Success: You have added [Leviton Omni-Bus Module](#) to your [shopping cart!](#)

# Omni-Bus Module Installation Notes

- When ready, press the “Checkout” button
- A new screen will display requesting Authentication Key Generation
  - Enter the MAC Address of the BitWise unit, located on the bottom or rear of the unit.
- Enter Billing Details, Payment
- Confirm Order



## Checkout

Coupon Codes must be added to your [Shopping Cart](#) before you check out!

### Step 1: Checkout Options

#### Authentication Key Generation

Your cart contains one or more protected Modules. Modules are purchased on a per-project basis. In order for the module to work, we must create an authentication key for your project. Please enter a valid MAC address for a controller that will be physically present in the installation.

Check out our [FAQs](#) to learn more about module authentication

The controller's MAC address can be found on a sticker on the bottom or rear of the unit

\*MAC Address

XX-XX-XX-XX-XX-XX

[Continue](#)

# Omni-Bus Module Installation Notes

## Confirmation Message Displayed

- Click the “Downloads” page link
- Click the “Download” link under the Product Files column, as shown below.
- Open Project Editor.
- Double click to install the downloaded file.

[Home](#) » [Shopping Cart](#) » [Checkout](#) » [Success](#)

## Your Order Has Been Processed!

### Authentication Keys

| Status | Module ID      | Message                    |
|--------|----------------|----------------------------|
| OK     | BW-MOD-OMNIBUS | Key Generated Successfully |

You should receive an email notification shortly.

You can view your order history by going to the [my account](#) page and by clicking on [history](#).

If your purchase has an associated download, you can go to the account [downloads](#) page to view them.

Thanks for your order!

## Account Downloads

Order ID: 11241

Size: 5B

Name: bw-mod-omnibus  
Date Added: 07/28/2015

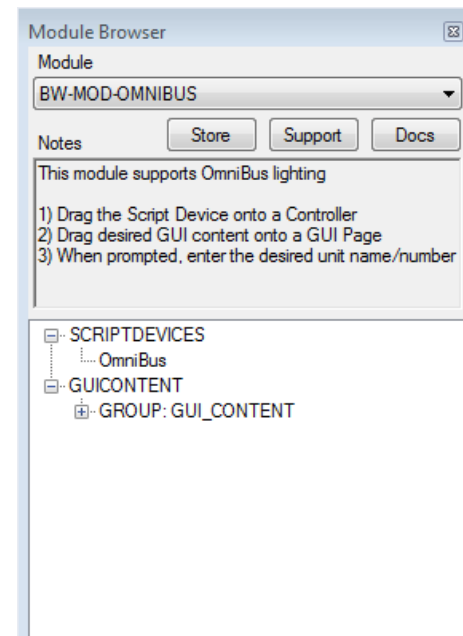
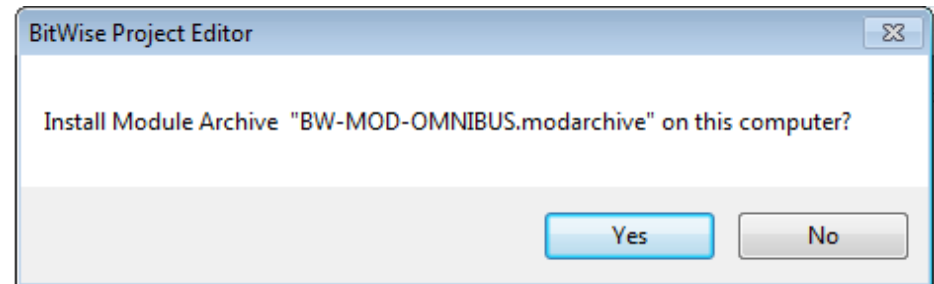
Remaining: 1

Authentication Key:  
BW-MOD-OMNIBUS\_94-4A-09-02-04-6F

Product Files:  
bw-mod-omnibus  
[Download](#)

# Omni-Bus Module Installation Notes

- Select “Yes” to install
- Next, the Module Browser will be displayed (in Project Editor) with instructions for implementing Omni-Bus lighting control into your BitWise file:
  - 1) Drag the script device to a BitWise controller’s script devices section
  - 2) Drag the desired GUI content onto a GUI page
  - 3) When prompted, enter the desired unit name/number

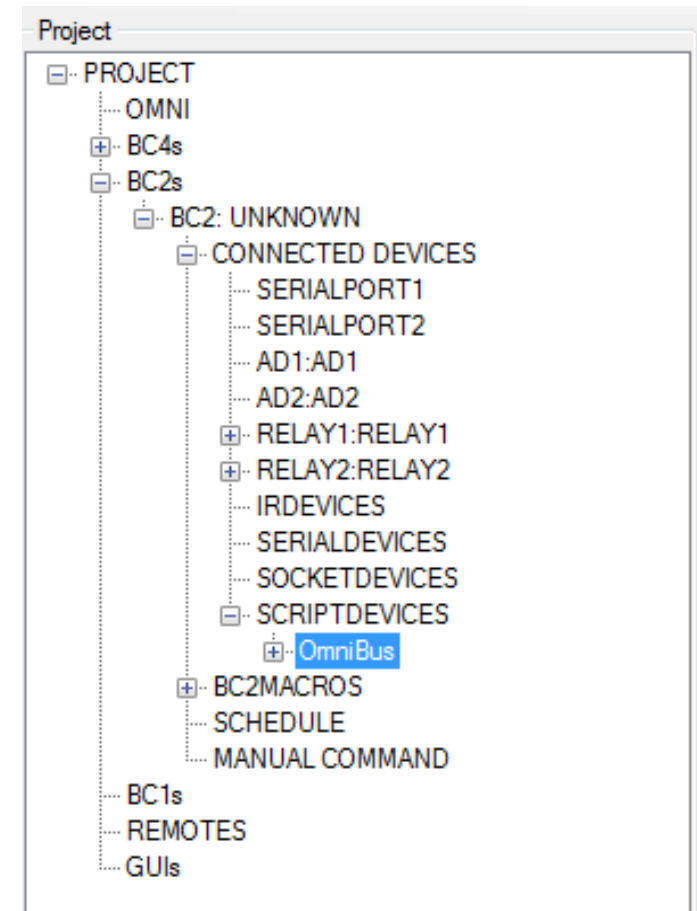




# Omni-Bus Module Installation Notes

## ■ 1) Drag the script device to a controller

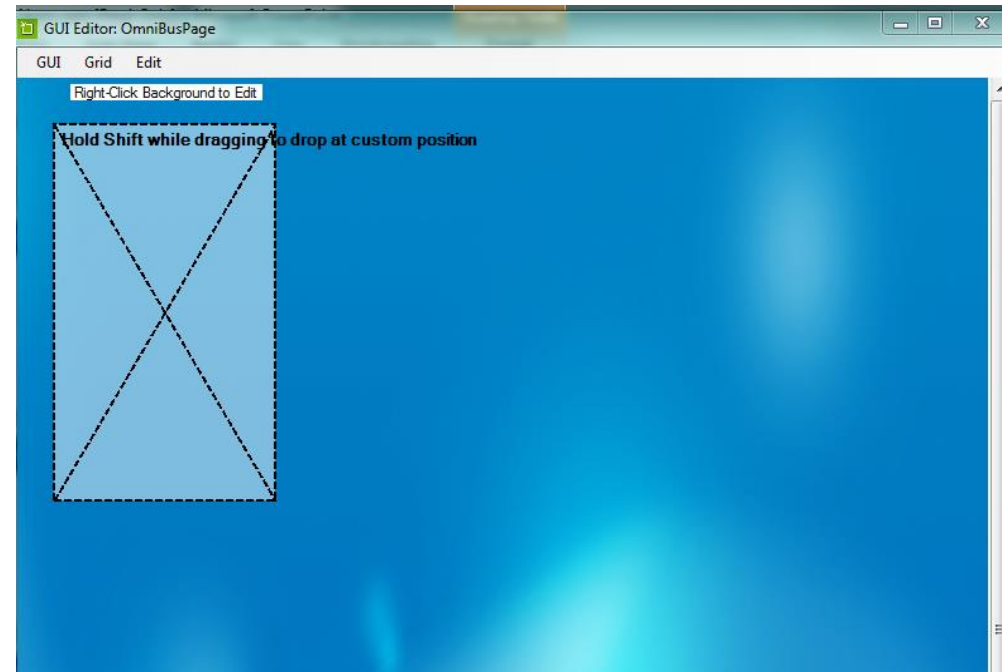
- We had a BC2 established in this project, so we simply drag the “Omni-Bus” script device from the right hand pane into the left-hand project pane.
- Drop onto the script device section of the BC2 (or BC1/BC4) that you’d like to integrate.
- The project tree will automatically grow and display the added Omni-Bus script device



# Omni-Bus Module Installation Notes

## ■ 2) Drag the desired GUI content onto a GUI page

- We had a GUI Group established on this project, so we ensure the GUI page editor is open, and simply grab the “Group GUI Content” and drag over to the GUI Group in left-hand pane
- Pull over the “Unit\_On\_Off”, “Dimmer\_GUI” or “Button\_On\_Off” to a GUI Page in the left hand menu.



# Omni-Bus Module Installation Notes

- **3) When prompted, enter the desired unit name/number**
  - We will drag “Unit\_On\_Off” as our example.
  - A pop-up will display requesting unit name and number, accessible via Omni-Bus Setup Software.
  - We enter “Front Light” as unit name and 002 as the unit #.
    - Unit must be entered as a three digit number, for example 009, 050, or 100

Replacement Variables

This GUI Content contains Replacement Variables.  
You must supply values for each Variable before adding the GUI Content

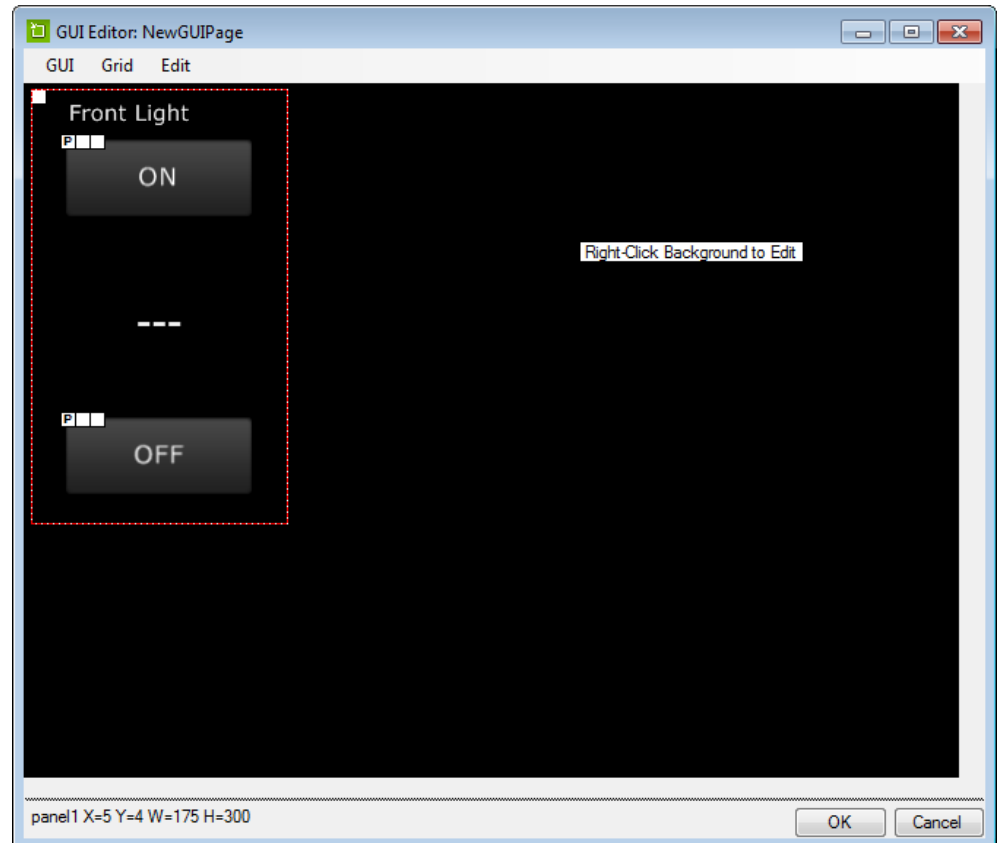
|                  |                      |                         |
|------------------|----------------------|-------------------------|
| <i>Unit Name</i> | <input type="text"/> | Name of the Unit to add |
| <i>Unit ID</i>   | <input type="text"/> | ID of the Unit to add   |

OK Cancel

# Omni-Bus Module Installation Notes

## ■ Basic GUI is Created for your lighting load!

- Allows On/Off control
- Can be edited (different colors/icons)



# Technical Installation Information

Third-Party Intercom Integration into BitWise

# Intercom Functionality for BitWise

## ■ Omni System Not Required

## ■ Integrates with 2N Door Stations

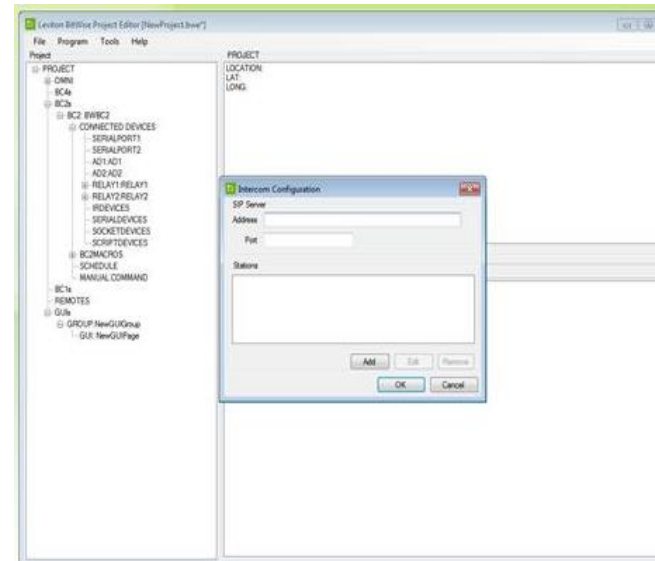
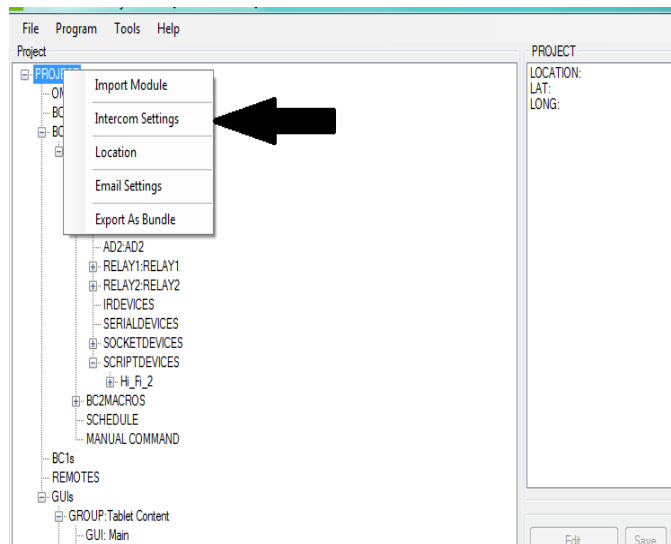
- Communicates back to Leviton OmniTouch 7 Touchscreens
- Ideal for front doors/gates

## ■ Within Project Editor:

- Right click the project tree, click intercom settings
- Make sure SIP server is pre-configured so it's easy
  - Grab names of devices from SIP server file
- Boot OmniTouch 7 touchscreen and it will ask what station it is.
  - Will show list from Project Editor, populated via SIP Server software and PC Access information

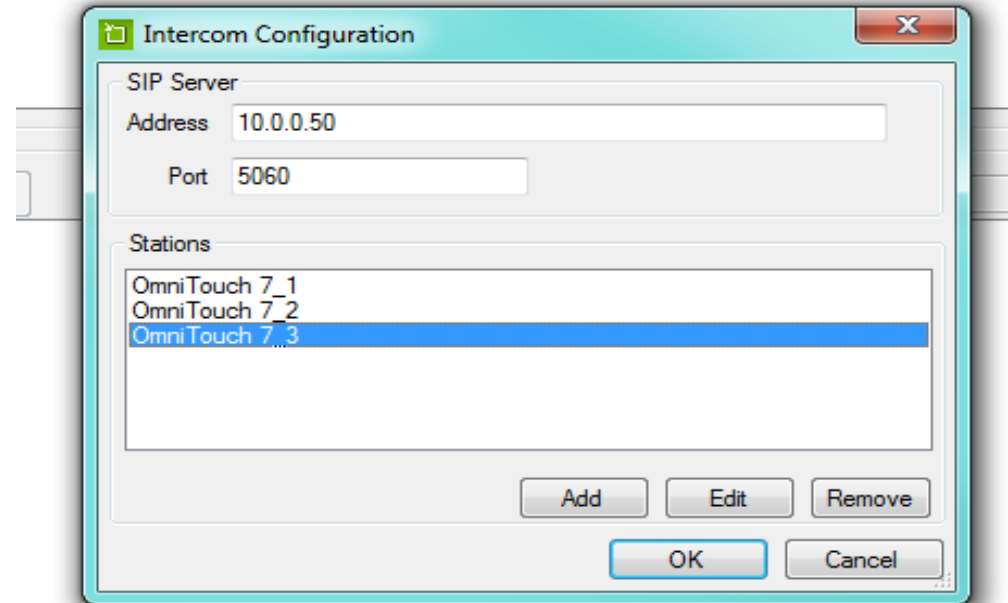
# Intercom Integration with BitWise

- As defined in the prerequisites, a pre-staged, working Intercom System has to be in operation. This third-party device will have minimal programming requirements on our BitWise controller.
- To begin set up, Right Click on the Main Project line, select Intercom Settings, and input your SIP Server information



# Intercom Setup

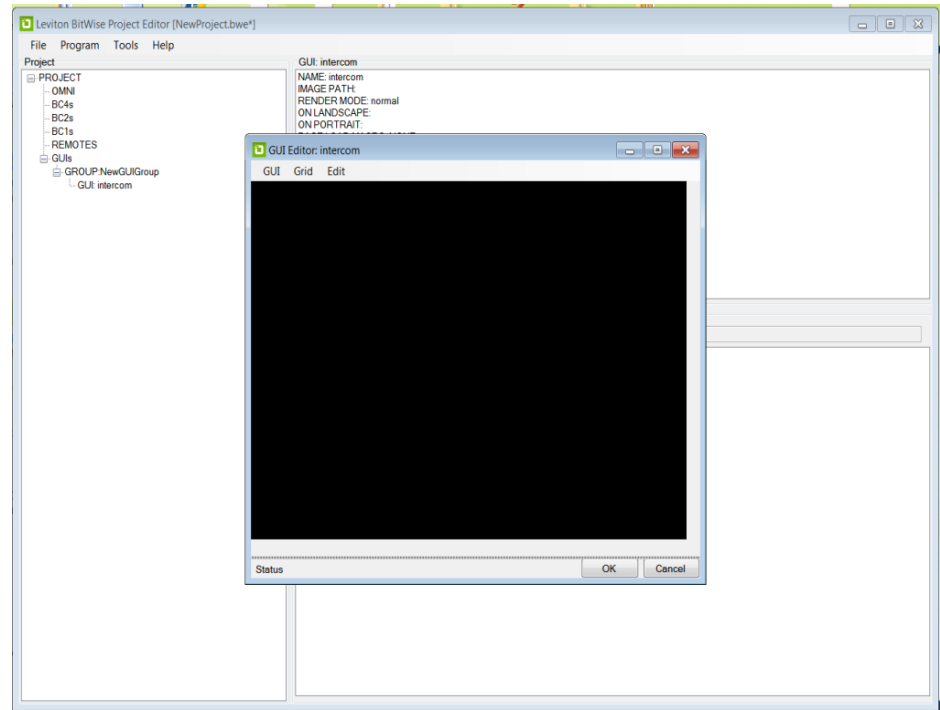
- Now click “Add” to add your OmniTouch 7 Touchscreens.
  - In this instance, we have labeled this OmniTouch 7 \_ 1





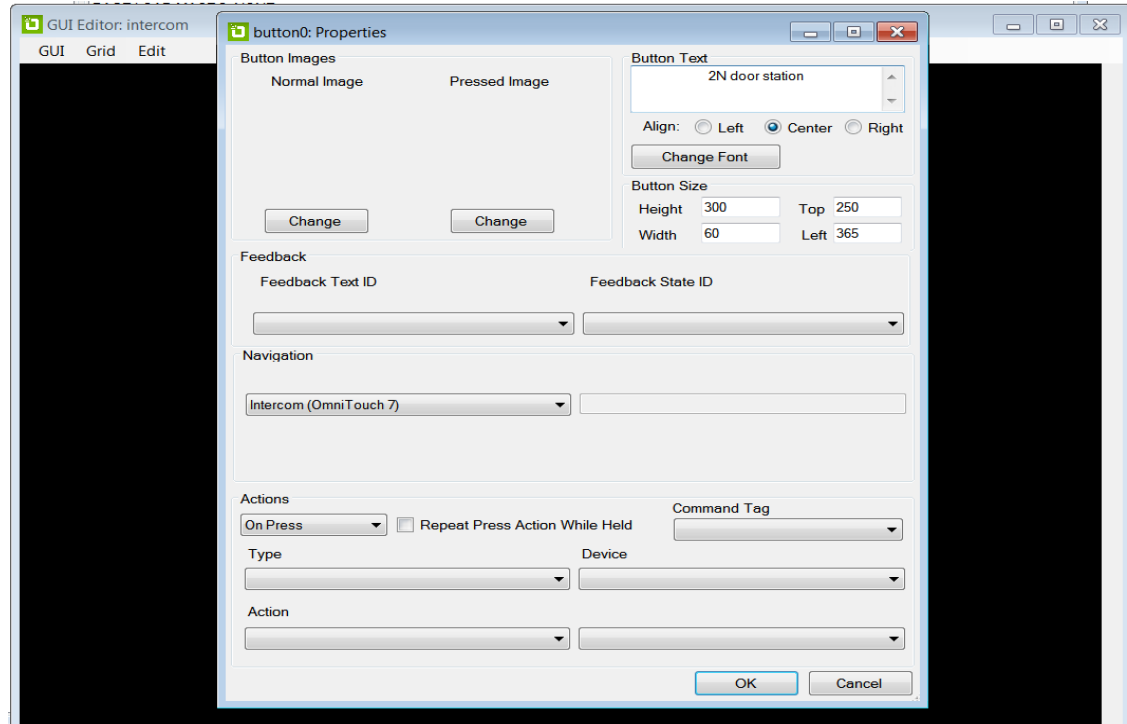
# Intercom Setup Continued

- We previously learned how to add a GUI group.
- We add ours, labeling it “Intercom”



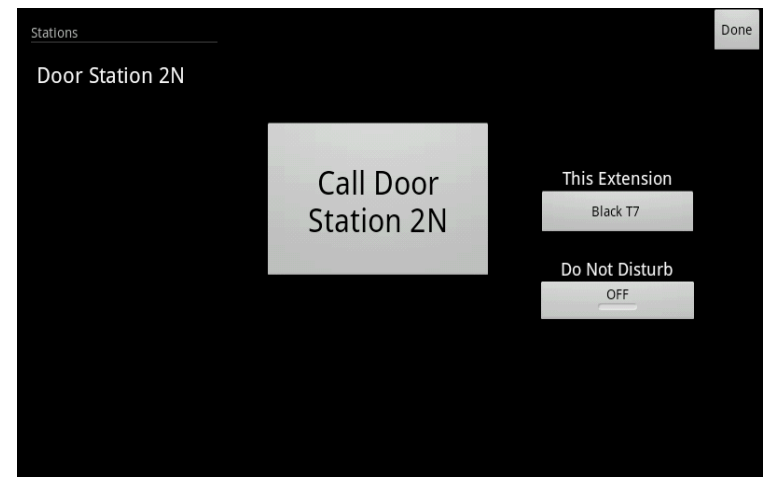
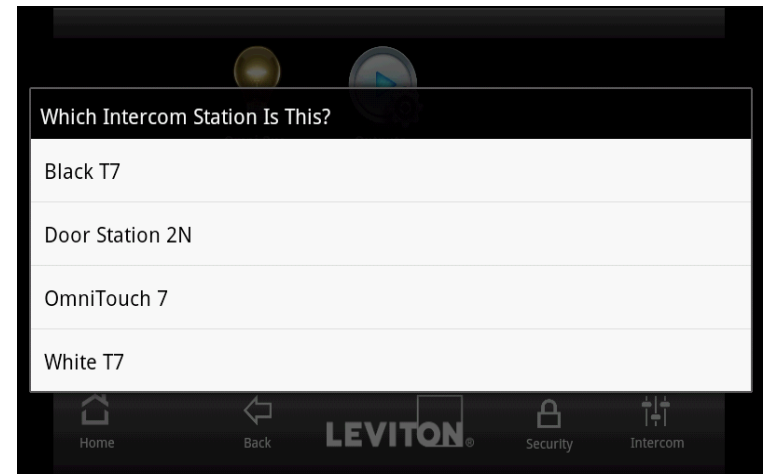
# Add Button to Intercom GUI

- We will now add an Intercom button to our GUI page.
- You may use the preset buttons found on our downloadable template or use your custom button.
- Note the Navigation pull-down says: Intercom

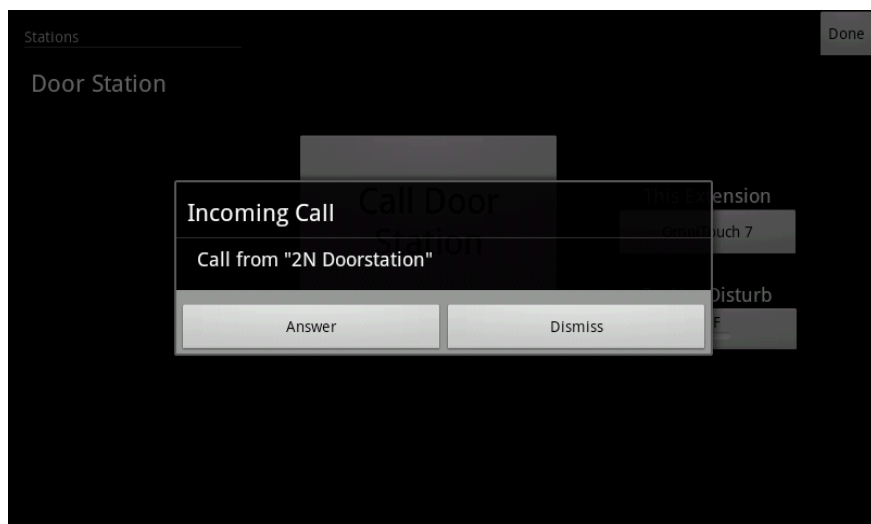


# Intercom Deployment

- Once we add our Intercom stations, we then define each OmniTouch 7, and deploy the project.
- Default interface:



# Additional Default Interfaces



# Marketing Information

Omni Integration into BitWise AV Systems

# Omni + BitWise FAQs

- **Why would I add the Omni and BitWise systems together? Aren't they both powerful automation systems stand-alone?**
  - Yes, but you gain additional benefits by linking them together since Omni is security focused and BitWise is AV focused. Now, when arming your alarm at night, you can turn off every TV and audio component in the house without wandering around in the dark. Or you can press a Party button and arm the alarm, lower the shades, lock the doors, activate appropriate AV gear and more.
- **Can I customize graphic interfaces by combining these systems?**
  - Yes, Leviton even offers our default graphics package for free, meaning you can mimic our award-winning template or start with your own design.
- **Do I need an Omni system to integrate Omni-Bus or Intercom into BitWise?**
  - No, these new integrations are separate and do not require an Omni.

# Marketing Materials

## ■ Marketing Bulletin

## ■ Product Bulletin:

- Highlights
- Part #'s

## ■ Spec Sheets/Web Descriptions Updated

- <http://leviton.com/bitwise>

## ■ Web Banners

## ■ External Webinar Coming Soon!

Product Bulletin for  
Integrated BitWise + Omni Controllers



Integrated BitWise + Omni Control Systems



### Customizable Security + AV Automation

Leviton's driver for Omni security systems and BitWise audio/video controls provides a tightly integrated comprehensive automation system for residential and commercial properties, allowing for customized screens using Project Editor software.

#### Specifications

- Omni integration into BitWise Control Systems
- OmniTouch 7 graphical elements (icons/backgrounds) now available in free HTX2 graphics package, allowing custom interfaces via BitWise Project Editor
- Drag & Drop commands, feedback, plus built-in GUI content for Omni devices:
  - Security
  - HVAC
  - Lighting
  - Audio Zones
  - Locks
  - Buttons/Macros

- BC1/BC2 macro triggers for all of the above Omni devices
- Faster project file uploads for projects with lots of IR devices
- Faster project file uploads for projects without Room Remotes
- Improved "raw" IR import

- Now supports intercom (Leviton OmniTouch 7 Touchscreen to third-party door station)
- New free module for Omni-Bus lighting control systems, downloadable via BitWise Store.



# Thank You

[Leviton.com](http://Leviton.com)

